


Y  
A  
M  
A  
C  
R  
A  
W

1  
9  
3  
4









Digitized by the Internet Archive  
in 2010 with funding from  
Lyrasis Members and Sloan Foundation

<http://www.archive.org/details/yamacraw193411ogle>

EDITED BY

SARA SHARPE

THORNWELL JACOBS, JR.

The  
1934

Y

A

M

A

C

R

A

W

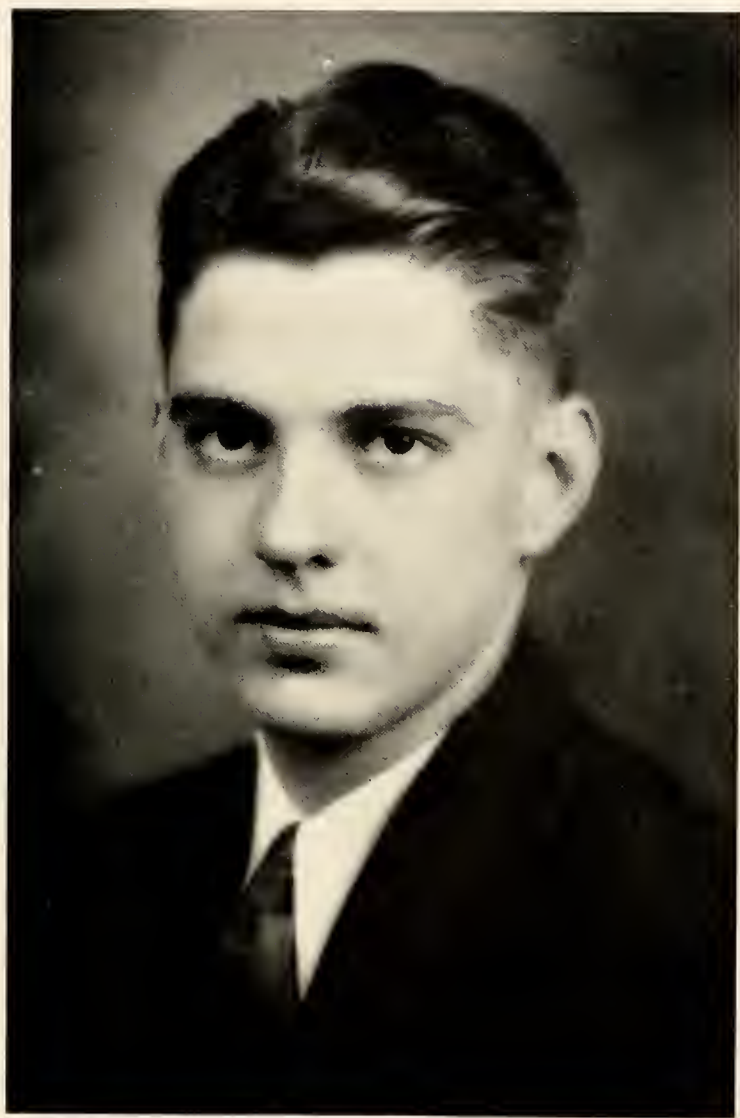
of


Oglethorpe University



## IN MEMORIAM

WE OF THE YAMACRAW, AND OF THE STUDENT  
BODY, DEDICATE THIS PAGE TO AN ERSTWHILE  
FRIEND AND FELLOW STUDENT, JACK HANSON, OF  
AUGUSTA. WE HOPE IN THIS WAY TO SHOW APPRE-  
CIATION OF A FRIENDSHIP THAT WE WILL ALWAYS  
REMEMBER.





## Editor's Note

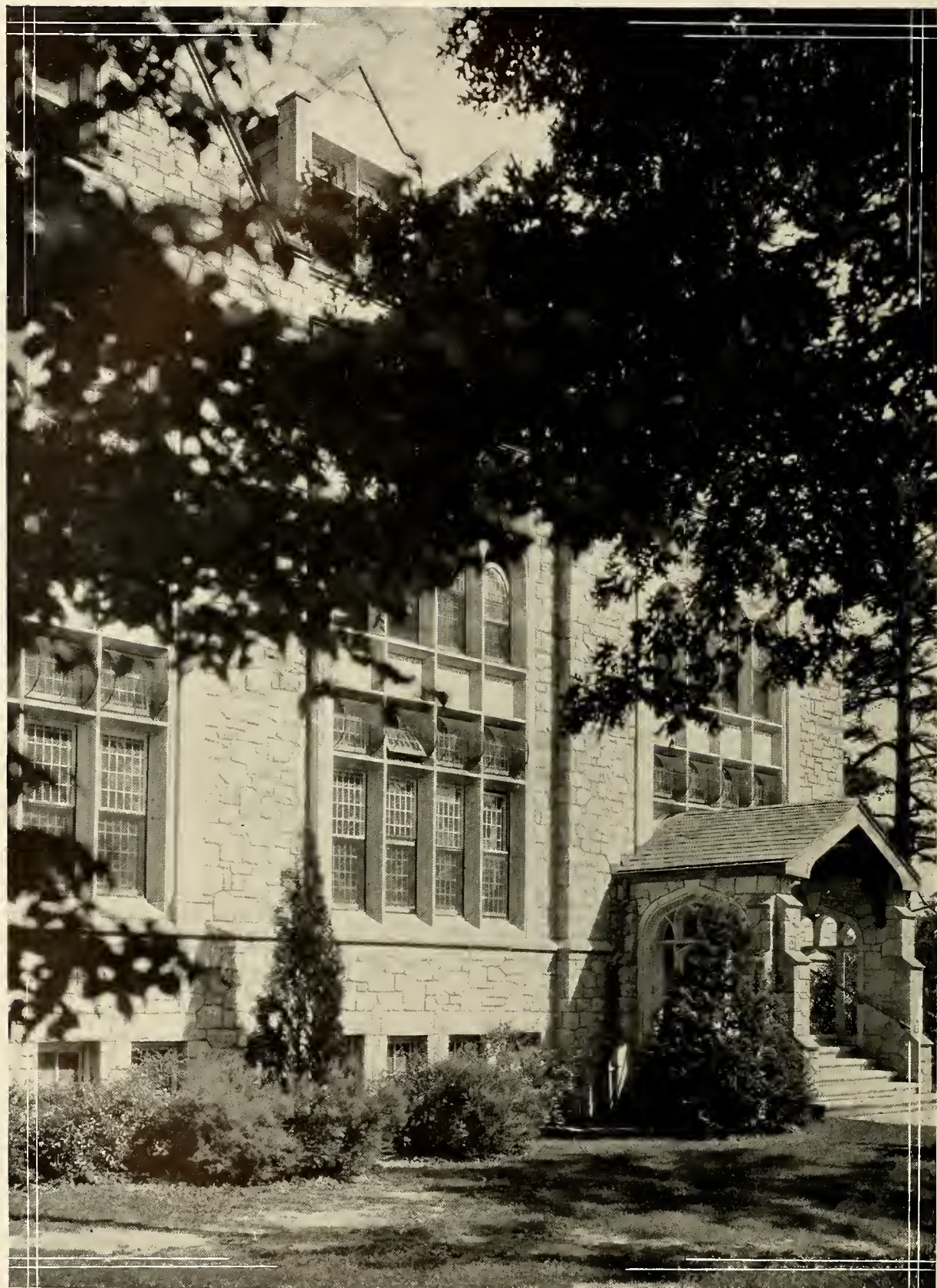
*If, in years to come when you leaf through the pages of this book, it recalls pleasant memories of your fellow students and campus days, then we who have worked for you will feel that we have accomplished our purpose.*

# Campus


















Administration







## The President's Message

What should be said to the graduating class of a modern American college that would be worth remembering in years to come?

First: Remember you are starting life all over again. If you have made mistakes and blunders, forget them. A new world lies before you.

"How ample the marsh and the sea and the sky."

Second: If you have made good use of your opportunities at college, you must know by now that nothing really matters except the quality of your own thoughts and feelings and deeds. All of your future life will be an expression of your character.

"Es ist der geist der sich den koerper baut."

Third: Remember that the more excellent the goal that you set for your endeavors the more certain it is that you will never arrive at it.

"A search is the thing he has taught you  
For height and for depth and for wideness."

Fourth: Remember that in proportion as you rigidly perform your duty, you will create enemies on the outside and in proportion as you do not rigidly perform your duty, you will create enemies on the inside. The former may harass you, but the latter will destroy you.



DR. THORNWELL JACOBS



DR. JAMES FREEMAN SELLERS



DR. JAMES FREEMAN SELLERS

A.B., and A.M., University of Mississippi; LL.D., Mississippi College; Sc.D., Mercer University; Graduate Student, University of Virginia and University of Chicago; Professor of Chemistry, Mississippi College and Mercer University; Dean of the Faculty, Mercer University; Professor of Chemistry, A. E. F., University, Beaune, France; Y. M. C. A., Educational Secretary, England; Fellow American Association for the Advancement of Science; President of Georgia Section American Chemical Society; Author Treatise on Analy-

tical Chemistry; Contributor to Scientific and Religious Journals; Dean of the School of Science and Dean of Oglethorpe University.

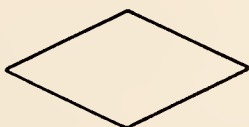
#### ASSOCIATE PROFESSORS

DR. JOHN A. ALDRICH

HAROLD JONES

DR. HARDING HUNT

VERNON ANDERSON





DR. GEORGE FREDERICK NICOLASSEN

A.B., University of Virginia; A.M., University of Virginia; Fellow in Greek, John Hopkins University, two years; Assistant Instructor in Latin and Greek Johns Hopkins University, one year; Ph.D., Johns Hopkins University; Professor of Ancient Languages in the Southwestern Presbyterian University, Clarksville, Tennessee; Vice-Chancellor of the Southwestern Presbyterian University; Member Classical Association of the Middle West and South; Author of Notes on Latin and Greek; Greek Notes Revised; The Book of Revela-

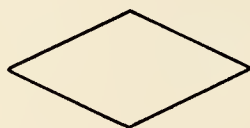
tion; Dean of the School of Liberal Arts Oglethorpe University.

#### ASSOCIATE PROFESSORS

FRANCISCO PEREZ

MME. PATELLI

PIERRE S. POROHOVSHIKOV

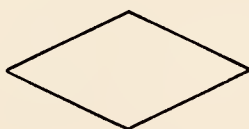




DR. HERMAN J. GAERTNER

A.B., Indiana University; A.M., Ohio Wesleyan University; Ped.D., Ohio Northern University; Teacher and Superintendent in the common and high schools of Ohio and Georgia; Professor of Mathematics and Astronomy, Wilmington College, Ohio; Professor of History, Georgia Normal and Industrial College, Milledgeville, Georgia; Member of the University Summer School Faculty, University of Georgia, six summers; Pi Gamma Mu; Assistant in the organization of Oglethorpe University; Dean of the School of Education and

Director Graduate School and Extension Department of Oglethorpe University.





DR. JAMES EDWARD ROUTH

A.B., and Ph.D., Johns Hopkins University; winner Century Magazine Essay Prize for American College Graduate of 1900; Phi Beta Kappa; Sub-editor, Century Dictionary Supplement, N. Y., 1905; Instructor, University of Texas and Washington University; Acting Assistant Professor, University of Virginia; Assistant and Associate Professor, Tulane University; Professor of English, Johns Hopkins University Summer School, 1921, 1922, 1925, 1926; Life Member Modern Language Association; Author, Two Studies on the

Ballad Theory of the Beowulf, the Rise of Classical English Criticism, Contributor to Modern Language Association, Journal of English and Germanic Philology, Englische Studien, South Atlantic Quarterly, etc. Dean of the School of Literature and Journalism and of the School of Radio Management, Oglethorpe University.

#### ASSOCIATE PROFESSORS

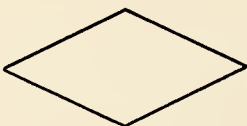
PAUL CARPENTER

STERLING LANIER

ROBERT D. ENGLAND

DR. WIGHTMAN F. MELTON

CLAUDIA SMAW





DR. MARK BURROWS

B.S., Stanberry Normal School; A.B., State Teachers' College, Kirksville, Missouri; A.M., Oglethorpe University; Ped.D., Oglethorpe University; Teacher and Superintendent in the Public and High Schools of Missouri; Director Department of Commerce, State Teachers' College, Kirksville, Missouri; Professor of Rural Education in University of Wyoming and in State Teachers' Colleges at Kirksville and Greeley, Colorado; Editor, Rural School Messenger and The School and The Community, and Author of Treatises on Education; Member

of National Education Association and of National Geographic Society and National Academy of Visual Education; Dean of the School of Secretarial Preparation, and Director of the Summer Session, Oglethorpe University.

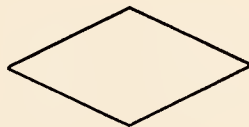
## ASSOCIATE PROFESSORS

B. E. ALWARD

OPAL KITTINGER

MRS. RUTH SANDERS

JACQUELINE GORDY



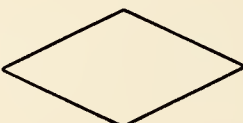


FRITZ PAUL ZIMMER

Student in the State Art Academy, Stuttgart, Germany and assistant instructor in life drawing and sculpture; A.M., and gold medal, Commercial Art School, Stuttgart; Student at Munich Art Academy and studio assistant; Director, costume designing and stage decorations State Opera House, Stuttgart; Instructor, Urania Commercial Art School, Zurich, Switzerland; Student in Architecture at Rome, Florence and Ravenna; Professor of Fine and Applied Arts, Dean of the School of Fine Arts, Oglethorpe University.

## ASSOCIATE PROFESSOR

CORA CARTER



*FRANCISCO PEREZ*

A.B. Havana University; A.M. Havana University; attended Medical University at Havana; Diploma in bookkeeping, Petman Metropolitan School, London, England; Professor of Romance Languages, Oglethorpe University.

*DONALD H. OVERTON*

A.B. and A.M. Oglethorpe University; Director of Intramural Athletics, Dean of the School of Physical Education and Freshman Football Coach, Oglethorpe University.

*D. WITHERSPOON DODGE*

A.B. Davidson College; B.D. Union Theological Seminary; D.D. Piedmont College; Lecturer in Correspondence Radio Department of Oglethorpe University.

*JOHN A. ALDRICH*

A.B. Albion College; M.S. and Ph.D. University of Michigan; Member of the Society of Sigma Xi; Professor of Astronomy and Physics at Oglethorpe University.

*MARGARET ELIZABETH LEWIS*

Instructor in Chinese; Transfer from Redlands, California.

*HARDING M. HUNT*

A.B. Tufts College; B.S. Harvard College; Danbury Normal School, B.S.; Professor of Biology at Oglethorpe University.

*PIERRE S. POROHOVSHIKOV*

Judge at the High Court of Justice in St. Petersburg, Russia; A.B. and First Graduate of the College of Alexander the I in St. Petersburg, Russia; Professor of Romance Languages at Oglethorpe University.

*B. E. ALWARD*

A.B. Cumberland College; A.M. Oglethorpe University; Assistant Professor in the Lowry School of Banking and Commerce at Oglethorpe University.

*MME. PATELLI*

Graduate of State Teachers College at Athens, Ga.; Instructor in Italian at Oglethorpe University.

*JOHN PATRICK*

Graduate of the School of Physical Education of Oglethorpe University; A.B. and A.M. Oglethorpe University; Coach of Varsity Football at Oglethorpe University.

*MYRTA BELLE THOMAS*

Graduate of the Carnegie Library School of Atlanta, Georgia; Librarian Mitchell College, Statesville, N. C.; Librarian of Oglethorpe University.

*E. A. BANCKER, JR.*

A.B. University of the South, Sewanee, Tenn.; M.D. Emory University in Atlanta, Georgia; Physician of Oglethorpe University.

*ROBERT DURANT ENGLAND*

B.S. University of Virginia; Editor Westminster Magazine; Assistant Professor of English at Oglethorpe; Student for M.A. degree.





### *Student Assistants*

MARY HUBNER WALKER	.	.	.	.	<i>Registrar's Office</i>
EMORY CHANDLER	.	.	.	.	<i>Chemistry</i>
MRS. RUTH SANDERS	.	.	.	.	<i>Typing and Shorthand</i>
INA REEVES	.	.	.	.	<i>Typing</i>

# Student Government



## Officers of Student Body

SIDNEY FLYNT . . . . *President of Student Body*

JACQUELINE GORDY . . . *Vice-President of Student Body*

## Student-Faculty Council

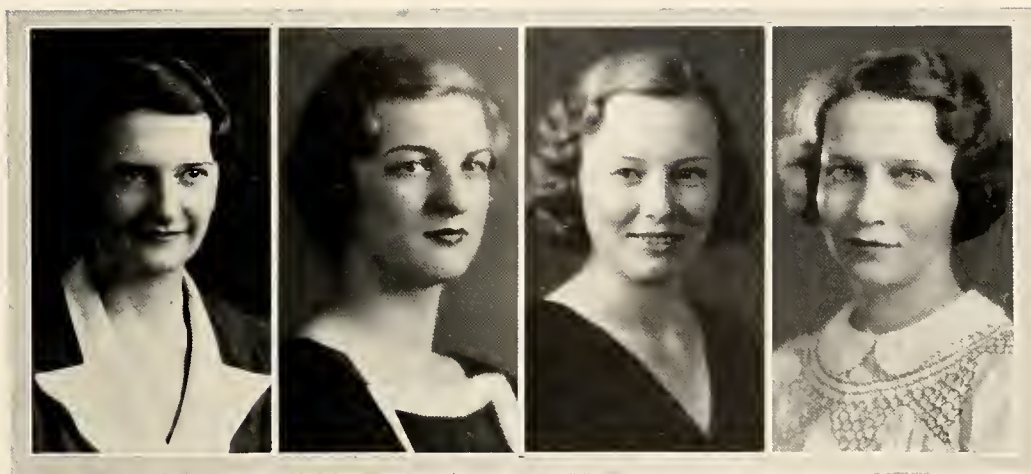
### M E M B E R S

JANETTE LYNCH, Senior

ALIENE TIMMONS, *Soph.*

AVERY COFFIN, Junior

SARA BEATTIE, *Freshman*



## Girls Student Faculty Council

ALINE TIMMONS . . . . . *Sophomore Class*

AVERY COFFIN . . . . . *Junior Class*

JEANETTE LYNCH . . . . . *Senior Class*

SARA BEATTIE . . . . . *Freshman Class*

### *On Departing*

'Tis but a fading memory  
But Oh! how fondly dear,  
Its thoughts are like a reveries,  
Through many a weary year.

I may not to the world disclose,  
This memory I hold so rare,  
Nor tell them of my many woes,  
And pains, and worry and career.

Who has not saved some simple thing,  
More precious than jewels rare,  
A faded picture, a broken ring,  
Or a lock of golden hair?

Is there a heart that does not keep,  
Within its hidden core,  
Some fond remembrance driven deep,  
Of the days that come no more?

BUELL G. GRANT

# What Happened in '33-'34

BY MERRIMAN SMITH

THE inauguration of Freshman Week on the Oglethorpe campus started the activities of the year rocking along early in the fall quarter. The school entertained the rats as they had never been entertained before . . . Bon fires . . . parades . . . an *alfresco tea* . . . and the highlight of Freshman Week, the picnic at the lake . . . Josephine Lippold and Bob Kupperts were chosen Mr. and Miss Freshman during the picnic and water carnival.

Football got under way and the Petrels brought warmth to the heart of the entire campus by completely upsetting and defeating the Jaspers of Manhattan in New York City. The season ended, however, with a defeat at the hands of Mercer. And then things began to happen . . . Coach Robertson resigned . . . President Jacobs announced a complete revolution of the dining room system . . . and before the campus could realize it, exams bore down upon the students.

Then came the holidays. The holidays were anxious ones. Many were in a hurry to return to test the new dining room system and when school did re-open, the dining room resembled something like a combination of the Waldorf-Astoria and the Ritz-Carlton. The co-eds flocked to the dining room as never before. A la carte became the password and it was not long before Pat Kilpatrick and his horn blowers were providing fine music during lunch each day and the student body had "Dinah" between the cocktail and the main course and "Doin' The Uptown Lowdown" between the salad and the desert. The change of the dining room was undoubtedly the outstanding event of 1934.

A lot of pretty snow came drifting down during the early part of February and held up spring training for a while. Spring training, by the way, was conducted under the excellent supervision of Coach Frank Anderson, John Patrick and Andy Morrow.

Then a pretty good bit of rain and then spring! Spring came with a flourish. Baseball started. The soul of socked horsehide emanated from Hermance Field every afternoon. Exams came and were survived by some.

As the YAMACRAW rumbles over the presses, the baseball season will start in earnest. The sororities will be planning big dances and there will be a good bit of activity to anticipate. A series of Commencement Dances looms up when we consult the calendar for May. The seniors are beginning to worry about the finals. And the YAMACRAW rumbles on.

All during the school year of '34, intramural athletics ran along their most desirable course. As this is written, the most exciting tournament to date was the boys basketball tourney and the superb play of the Alpha Lambda Tau team, lead by the lanky Ed Copeland, as it swept through the tournament undefeated, but severely contested.

The feeble tapping of this typewriter ceases as we recall . . . sorority houses instead of rooms during '34 . . . fraternity houses, also . . . the Chi O's upsetting the dope and winning the girls basketball crown . . . introduction of a course in Chinese . . . the many new co-op boys . . . Sterling Lanier, grandson of Sidney Lanier, as a professor, singing master and orchestra leader . . . a successful Glee Club . . . the debaters from Mercer and Freshman Perry's fine oratory.

The typewriter stops and the chronicles of the year ends.

*To the photographers of Elliott's Studios we dedicate this page for their fine work on the pictures of this book.*

S  
E  
N  
I  
O  
R  
S

Classes





S  
E  
N  
I  
O  
R  
S





HAROLD AARON

Brooklyn, N. Y.

Sigma Gamma

A.B. in Science

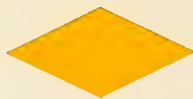




EDDIE ANDERSON

Decatur, Ga.

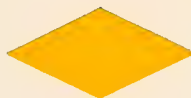
A.B. in Physical Education  
Pi Kappa Phi; Baseball, 2, 3, 4; Football, 3, 4; O Club.





FLORENCE JACKSON BRYAN

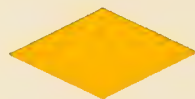
Atlanta, Ga. A.B. in Literature and Journalism  
Chi Omega; Duchess Club; Players Club; Tennis Doubles Champion 3; Tennis Singles  
Champion 3; Intramural Athletics; Free Throw Champion 2; Tennis Manager 4; Sec-  
retary of Chi Omega 3, 4; Honor Roll; Athletic Association; Intramural Letter 3.





MARY NORCOTT BRYAN

Atlanta, Ga. A.B. in Literature and Journalism  
Chi Omega; Players Club; Duchess Club; Intramural Athletics; Tennis Doubles Champion 3; Tennis Mixed Doubles Champion 3; Panhellenic President 4; Honor Roll; Intramural Letter 3; Athletic Association.



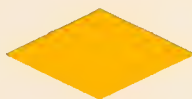


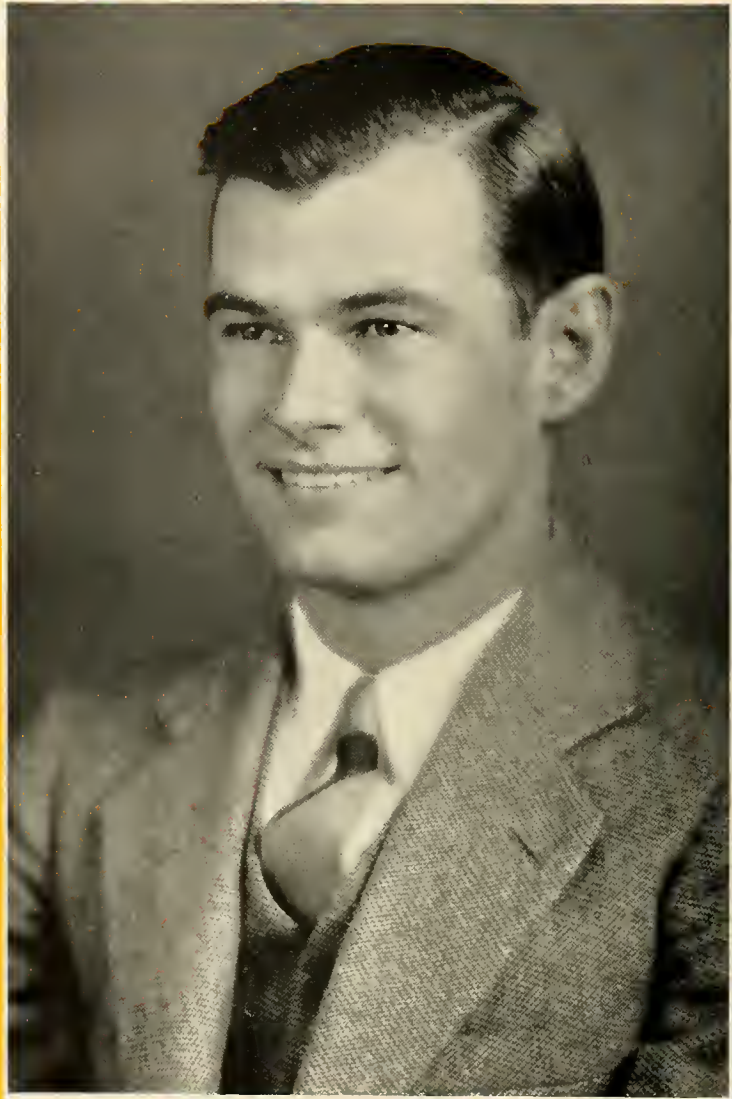
EMORY A. CHANDLER

Milledgeville, Ga.

A.B. in Physical Education

Delta Sigma Phi; Freshman Football 1; Varsity Football 2, 3, 4.

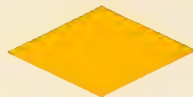




JOHN C. COMPTON

Atlanta, Ga.

A.B. in Literature and Journalism  
Kappa Alpha; Zeta Upsilon.





LOUIS LLOYD DAVIS

Savannah, Ga. A.B. in Commerce  
Phi Kappa Delta; Blue Key; Boar's Head; Lords Club; Coat-of-arms; Intramural  
Athletics.

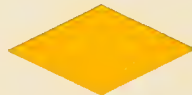




PURSE DIXON

Waycross, Ga.

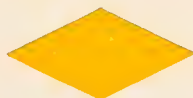
A.B. in Physical Education  
Alpha Lambda Tau; Baseball 1, 2, 3, 4; Intramural Athletics 1, 2, 3, 4.





MILDRED EAVES

Atlanta, Ga. A.B. in Education  
 Beta Phi Alpha; Co-ed Mother, 3, 4; Panhellenic President 3; Panhellenic Secretary  
 4; Coat-of-arms; Phi Kappa Delta; President Beta Phi Alpha 3, 4; Secretary Beta  
 Phi Alpha 2; Laboratory Assistant in Chemistry 3, 4; Sponsor Delta Sigma Phi fra-  
 ternity 3; Treasurer Women's Athletic Association 4; Honor Roll; Women's Student  
 Faculty Council 3, 4; Who's Who 3, 4; Intramural Athletics 2, 3, 4; Players Club.





SIDNEY FLYNT

Decatur, Ga. A.B. and M.A. in Literature and Journalism  
 Kappa Alpha; President Student Body 4; Editor-in-chief Stormy Petrel 4; Chairman  
 Debate Council 4; President Blue Key 4; President Kappa Alpha 4; Boar's Head; Lords  
 Club; Debate Council 1, 2, 3; Glee Club; O Club 4; Student Faculty Council 1, 2, 3;  
 Players Club; Secretary Players Club 2, 3; Sports Editor Yamacraw 4; Sports Editor  
 Petrel 2, 3; Varsity Football 2, 3, 4; Winner Freshman Football Numeral; Intramural  
 Letter 1; All-Intramural Basketball team 1; Football Program Manager 4; Chairman  
 Freshman Week Committee 4; Intramural Boxing, co-holder Light Heavyweight Title 1;  
 Phi Kappa Delta; Student Speaker Commencement Exercises.



NELLIE JANE GAERTNER

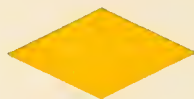
Atlanta, Ga. A.B. in Literature and Journalism  
Chi Omega; Players Club; Phi Kappa Delta; Coat-of-arms; Debate Council.





EMMA GATES

Atlanta, Ga. A.B. in Education  
Beta Phi Alpha; Transfer from State Teachers' College, Hattiesburg, Mississippi; Play-  
ers Club; President Beta Phi Alpha Pledge Club.

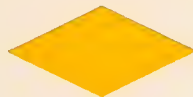


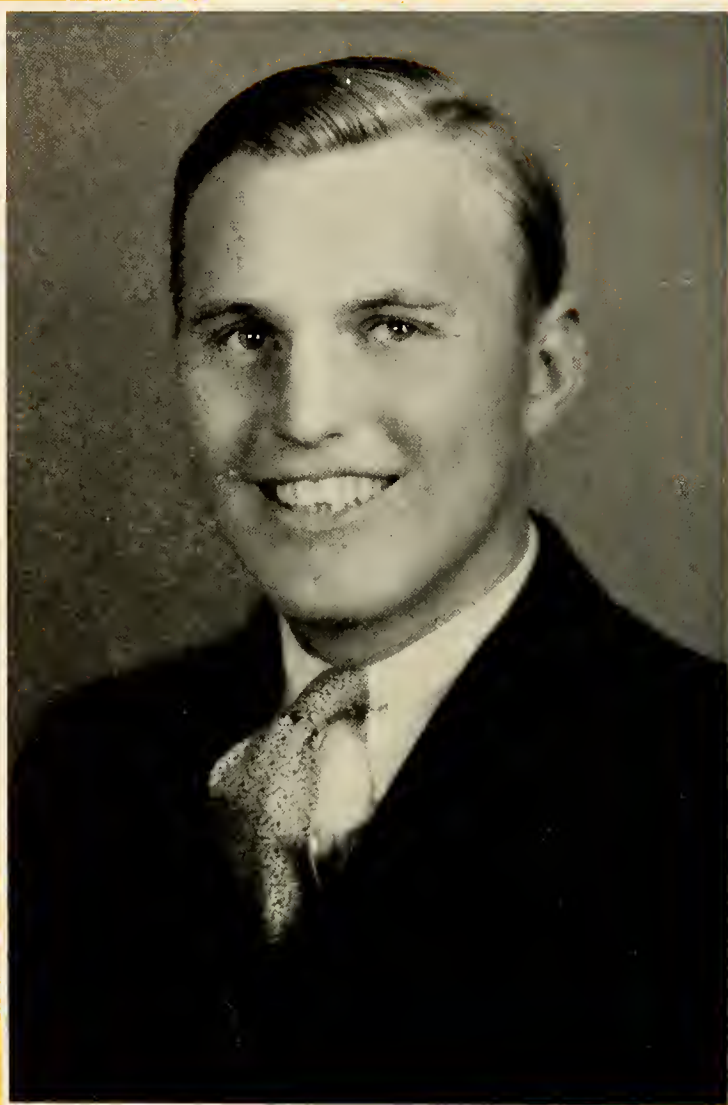


JAY P. GLENN

Atlanta, Ga.

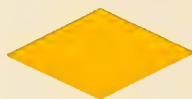
A.B. in Commerce  
Sigma Alpha Epsilon; Lords Club; Stray Greek Club; Players Club.





JULIAN HERRIOT

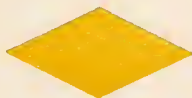
Savannah, Ga. A.B. in Physical Education  
Pi Kappa Phi; Zeta Upsilon; Football 1, 2, 3, 4; Players Club; Theta Alpha; Intra-  
mural Athletics.





PHILIP HILDRETH

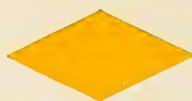
Savannah, Ga. A.B. in Commerce  
Pi Kappa Phi; Football 1, 2, 3, 4; Class President 1, 2, 3, 4; Blue Key; Lords Club;  
Boar's Head; Intramural Athletics.





JANE MADELAINE LEWIS

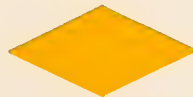
Atlanta, Ga. A.B. in Science  
Assistant in Biology Laboratory 2, 3, 4; Sophomore Class Poet; Junior Class Treasurer;  
Honor Roll.





RUTH E. LEWIS

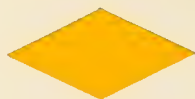
Atlanta, Ga. A.B. in Literature and Journalism  
Delta Zeta; Historian of Senior Class; Players Club; Debate Council; Transfer from  
Butler University, Indianapolis, Indiana.





HERMAN LANGE

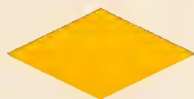
Savannah, Ga. B.S. in Science  
Alpha Lambda Tau; Le Conte Honorary Fraternity; Players Club; Intramural Athletics; Laboratory Assistant in Physics; Phi Kappa Delta; Coat-of-arms; Honor Roll.





DAVID LASHNER

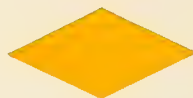
Brooklyn, N. Y. A.B. in Education  
Sigma Gamma; Orchestra 2, 3; Director of Band 4; Players Club; President of Sigma  
Gamma.





THORNWELL JACOBS, JR.

Atlanta, Ga. A.B. in Literature and Journalism  
Kappa Alpha; Vice-President Zeta Upsilon; Vice-President Kappa Alpha; Players Club;  
Managing Editor Petrel 4; Business Manager Yamacraw 4; Intramural Letter 3; Coat-  
of-arms Sweater; Entered school '31; A.A. Degree '32.





JESS R. JOHNSTON

Atlanta, Ga.

Debate Council; Honor Roll; Le Conte Honorary Fraternity.

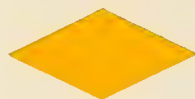
A.B. in Science





JANET LINCH

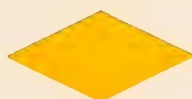
Atlanta, Ga. B.S. in Science  
Assistant in Biology Laboratory 2, 3, 4; Senior Representative Student Faculty Council  
4; Intramural Athletics.





SARA MITCHELL

Atlanta, Ga. A.B. in Literature and Journalism  
Kappa Delta; Intramural Athletics; Free Throw Champion 3; Coat-of-arms; Petrel  
Staff 2, 3, 4; Assistant to Bursar.





Brooklyn, N. Y.

LEON RUBIN  
Sigma Gamma

A.B. in Science



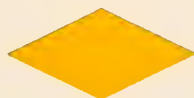


MRS. RUTH SANDERS

Atlanta, Ga.

Instructor in Typing and Shorthand.

M.A. in Commerce



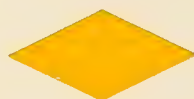


INA ALLEN REEVES

Atlanta, Ga.

A.B. in Literature and Journalism

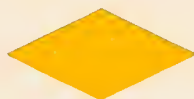
Jean d'Arc French Medal 2; Secretary WJTL 3; Teacher in Typing 4.





ALBERT SEGRAVES RILEY

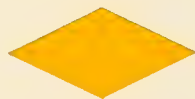
Griffin, Ga. A.B. in Literature and Journalism  
Sigma Chi; Member Institute Radio Engineers; Instructor of Wireless Telegraphy in  
School of Radio Broadcasting; Radio Engineer WJTL.





GENEVIEVE NEUHOFF

Atlanta, Ga. A.B. in Education  
Kappa Delta; Duchess Club; Intramural Athletics; Treasurer Kappa Delta.

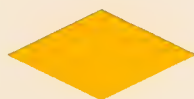




MRS. ENRICHETTA CARRABOTTA PATELLI

Torino, Italy  
Instructor in Italian; Founder and Faculty Advisor of Italian Club; Players Club.

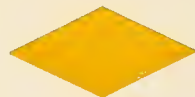
A.B. in Literature and Journalism





SARA SHARPE

Atlanta, Ga. A.B. in Commerce  
 Beta Phi Alpha; Editor-in-chief Yamacraw 4; Petrel Staff 1, 2, 3; Secretary and Treasurer Duchess Club; Panhellenic Council 3, 4; President Players Club 3; Who's Who 1, 2, 3; Italian Club; Petrel Club; Secretary and Treasurer Freshman Class; Intramural Athletic Sweater 2; Intramural Athletic Letter 1, 2, 3; Secretary Beta Phi Alpha 3; Yamacraw Staff 2; Woman's Athletic Association; Broad Jump Champion 2; Vice-President Beta Phi Alpha 4; Spanish Club.



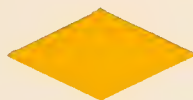


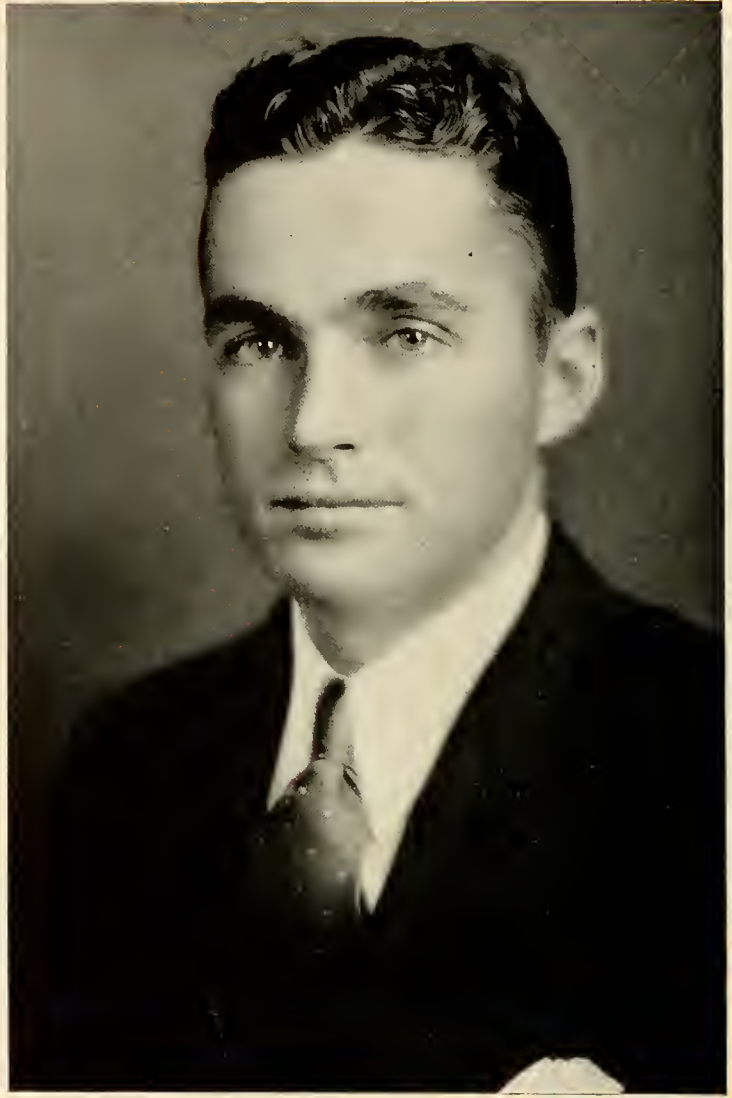
RUDOLPH SHOUSE

Manchester, Ga.

A.B. and M.A. in Literature and Journalism

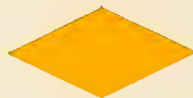
Blue Key; Pi Kappa Phi; Football 1, 2, 3, 4; O Club; Players Club.





ROBIN THURMOND

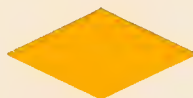
Lords Club; Football 1, 2, 3, 4; Captain Football team 4; O Club; Blue Key; Olympic Club; Secretary Senior Class; Chairman Student Faculty Council 4.





CHARLES M. VANCE

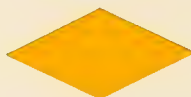
Atlanta, Ga. A.B. in Physical Education  
Baseball 1, 2, 3, 4; Olympic Club; All-American Catcher 3; O Club; Intramural Athletics 1, 2, 3, 4.





MRS. MARY HUBNER WALKER

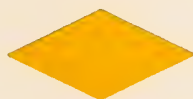
Atlanta, Ga. A.B. in Literature and Journalism  
Secretary to the Dean; Assistant to the Registrar; Honor Roll; Secretary Italian Club;  
Married on the campus July 30, 1933.





FRANK L. B. WALL

Atlanta, Ga. A.B. in Literature and Journalism  
Theta Kappa Nu; Freshman Baseball; Vice-President Spanish Club 2.





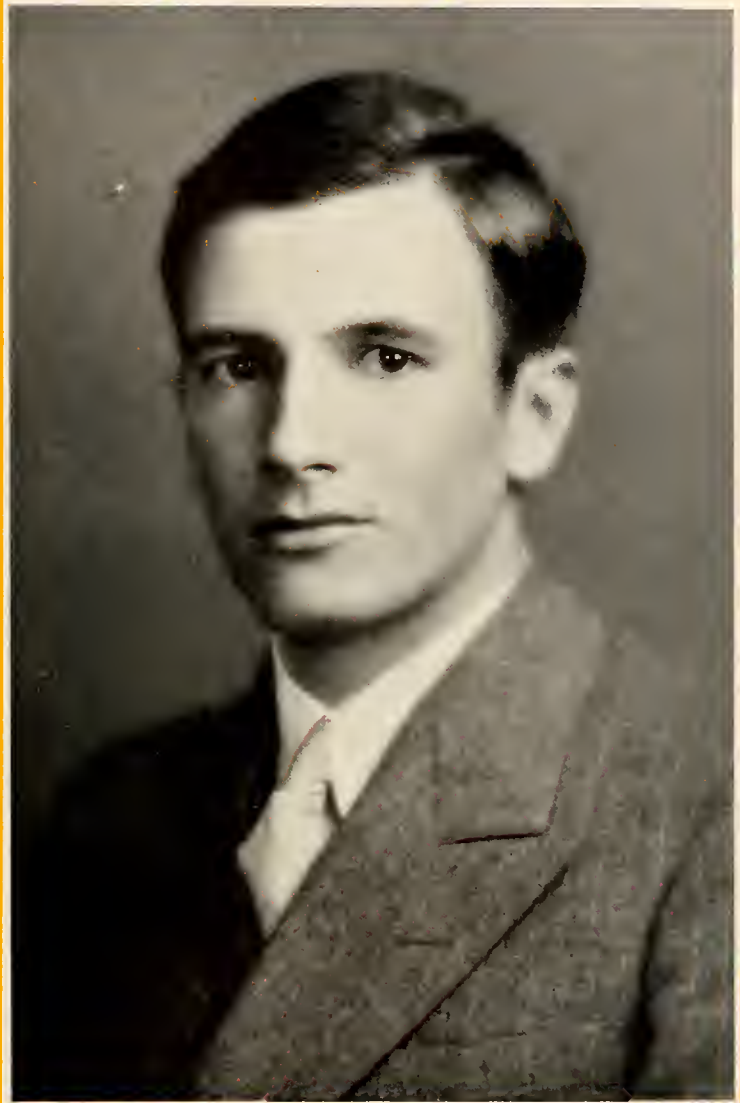
ELMER WALLS

Roopville, Ga.

Honor Roll; Biology Laboratory Assistant 3, 4; Glee Club.

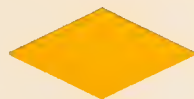
A.B. in Education

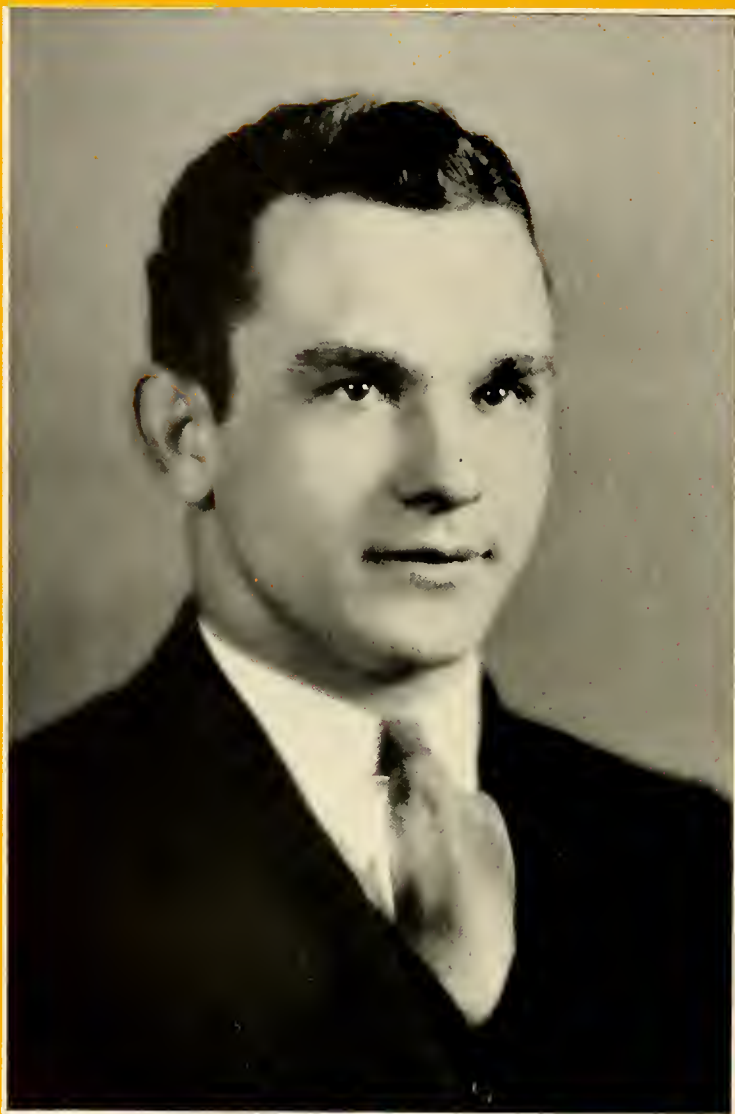




GILBERT WOOD

Savannah, Ga. A.B. in Commerce  
Delta Sigma Phi; Boars Head; President Delta Sigma Phi 4; Vice-President Blue Key;  
Lords Club; Intramural Athletics.



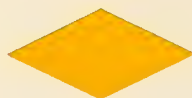


THOMAS C. WOOTEN

Crescent City, Fla.

Pi Kappa Phi; Intramural Athletics; Zeta Upsilon.

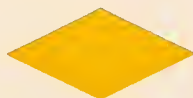
A.B. in Commerce





CHARLES SPENCER WORTHY

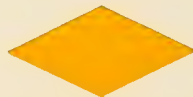
Columbus, Ga. A.B. in Science  
Kappa Alpha; President Le Conte Honorary Fraternity 3, 4; Knights of the Pipe;  
President Knights of the Pipe 3, 4; Radio Staff 3, 4.





HARRY P. WREN

Wrens, Ga. A.B. in Physical Education  
Alternate Captain Football team 4; O Club; Olympic Club; Intramural Athletics 2, 3, 4.

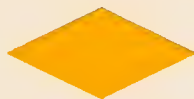




CHRISTINE WRIGHT

Norcross, Ga.

A.B. in Education



# Senior Class History

WE, THE class of '34, look back over our four enjoyable years with a tinge of reluctance knowing that time and experiences never return.

Under the guidance of Phil Hildreth, as president of the class, no end of accomplishments have been achieved. In the final year Freshman Week was inaugurated, and the Petrel Dining Hall with its dance orchestra will create lingering memories as the finale of our college life.

Phil Hildreth, four times president of his class, brings out the fact that one true leader will join with the citizens of our country. Hildreth also leaves with no end of football and basketball laurels to his credit. His stellar backfield ability recalls the Manhattan victory of 6-0 in '34, when the Petrels travelled all the way to New York to bring back glory to their Alma Mater.

Mildred Eaves, who holds the highest scholastic average in the University, leaves with the honor of having been co-ed mother for two years. Mildred, accompanied by Nellie Jane Gaertner, Lloyd Davis, and Gilbert Wood, has the honor of having the Oglethorpe coat-of-arms.

Four years ago with our class as freshmen, Intra-mural athletics began replacing inter-collegiate basketball. Equal opportunity in athletics made stars in the class such as Eddie Anderson, who holds the cross country record of two miles in eleven minutes, and then we look up to our classmate Happy Vance, who has the honor of being an All-American catcher in baseball. Then there are the football heroes. Bob Thurmond was captain this year, with Eddie Anderson, Emory Chandler, Jack Harrison, Phil Hildreth, Rudy Shouse, and Harry Wren, all members of the varsity, each with spectacular plays to his credit.

Now the finale of our four years' accomplishments as literati, this Yamacraw is appearing through the efforts of Sara Sharpe, Sidney Flynt, and Thornwell Jacobs, Jr., for your pleasure and amusement, and to add to your collection of high school annuals. Sid Flynt, president of the student body, and editor of the Petrel, we remember brought literary honor home when he went to Athens to the Press convention and aided in getting the Petrel accepted in the Georgia Collegiate Press association. With the leadership of these outstanding senior journalists, the Yamacraw was reincarnated after being dead for a year.

Leading in the social realm of the senior class were Mary and Florence Bryan who, we recall, made their debut last fall.

Having attained dignity, culture, and refinement, according to Lloyd Davis, Bob Thurmond, and Ruth Lewis, the officers assisting Hildreth, this band of classmates is prepared to be graduated. Though we hate to leave Oglethorpe, we are proud to know that upon our graduation, all that stands between us and the top of the ladder—is the ladder.



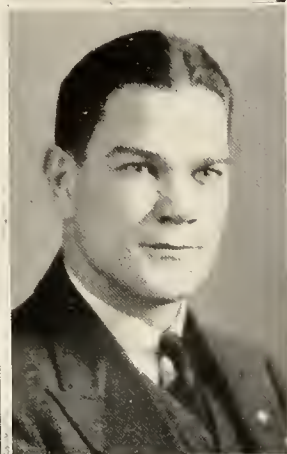
J  
U  
N  
I  
O  
R  
S



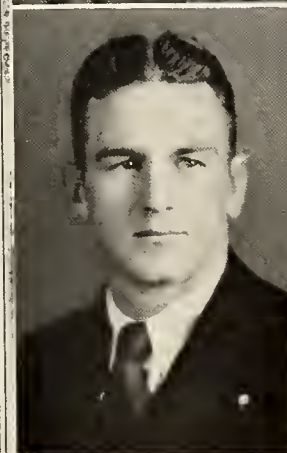
CATHERINE LEE LITTLETON  
Atlanta, Georgia  
ΒΦΑ



JOHN MCNEELY  
Toccoa, Georgia  
ΔΣΦ



CHARLES FISHER  
Gainesville, Florida  
ΔΣΦ





MARION FUGITT  
Atlanta, Georgia  
XΩ



MARTHA CARMICHAEL  
Atlanta, Georgia  
XΩ

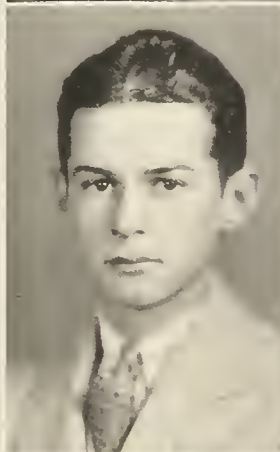


FAIRIS BAGWELL  
Duluth, Georgia

EVERETT PEED  
Atlanta, Georgia  
ΠΚΦ

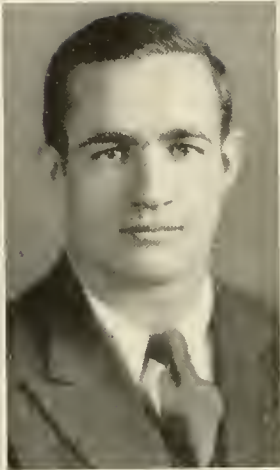


ALBERT CARTER  
Orlando, Florida  
ΠΚΦ



SIDNEY KILPATRICK  
Charleston, South Carolina  
ΚΑ





FRANK MITRICK  
Chicago, Illinois  
ΘΚΝ



ELSIE MARTIN  
Atlanta, Georgia

## Juniors Not In Pictures

Adams, Stinson, Jr.  
Beazley, Oscar  
Bentley, Marvin  
Brown, John R.  
Coffin, Avery  
Cox, Ethel Kathleen  
Deaver, Clarence  
Garner, Clark  
George, Jimmy  
Gordy, Jacqueline  
Jeffares, Carol  
Kittinger, Opal  
Leslie, Sam  
Lewis, Margaret E.  
Meier, Homer  
Middlebrooks, Abbie  
Moon, Cecil  
McDuffie, Leontes  
Murphy, Charles  
Noel, Annette  
Pittman, James  
Prevatt, Floyd  
Robinson, W. R.  
St. Clair, Frank  
Smiley, John  
Smith, Hubert  
Taylor, Sara Louise  
Truluck, Martha  
Whitfield, Albert

## The Spirit of Lanier

Yon trim Shakespeare on the cope of Lupton Hall,  
Calls through the sunny hours,

*"Oglethorpe, Oglethorpe,  
Where's Lanier? Where's Lanier?  
Is he here? Is he here?  
Here — Here — Here — Here?"*

And the solemn chimes give answer,  
*"Here he hath been, is, and will be,  
Evermore — forevermore!"*

And in the quiet moonlight,  
When the wind speaks of Okmulgee,  
Then the mockingbird, in memory  
Of his master's silver flute,  
Trills the echo of a spirit  
Catholic and heaven-high,  
That will not die,  
That — will — not — die!

\* \* \*

Affectionately dedicated to Lanier's twin spirit—  
Thornwell Jacobs.

—WIGHTMAN F. MELTON



S  
O  
P  
H  
O  
M  
O  
R  
E  
S



SIDNEY KLEIN  
Atlanta, Georgia



HERTA RICE  
Atlanta, Georgia



JAMES RICHARDSON  
Garnett, South Carolina



ST. JULIAN PRINGLE  
Atlanta, Georgia



EVELYN BURNS  
Atlanta, Georgia



WILLIAM CONNELL  
Savannah, Georgia

JAMES CROMER  
Atlanta, Georgia



BILLIE HAPHOLDT  
Decatur, Georgia



CLAUDINE GATES  
Atlanta, Georgia



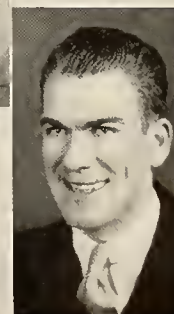
JEAN FARRELL  
Atlanta, Georgia



KELLY BYERS  
Rome, Georgia



ED COPELAND  
Atlanta, Georgia





ELIZABETH WOOLFORD  
Atlanta, Georgia



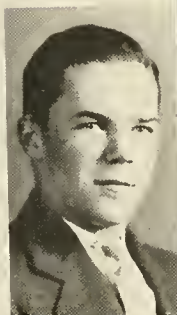
PAUL CARPENTER  
Atlanta, Georgia



SARA FELLARS  
Atlanta, Georgia



ALINE TIMMONS  
Atlanta, Georgia



WILLIAM BORMAN  
Palm Beach, Florida



SAM GELBAND  
Brooklyn, New York

PAULINE COLEMAN  
Atlanta, Georgia

EVELYN WIX  
Atlanta, Georgia

BARBARA NOOT  
Atlanta, Georgia

MARION BRYSON  
Atlanta, Georgia

DOROTHY SHEPERD  
Atlanta, Georgia

LOUISE REAVES  
Atlanta, Georgia



# Sophomore Class

BY JEAN WARD FARRELL

THE Sophomore Class of 1933-34 was one of the most representative groups on the campus. Its roster included the names of students who were outstanding in their particular field of activity.

In football, the names of Frieman, Pickard, Farmer, Byers, and Shaw, were prominent, and they stood out as some of the better players on the Stormy Petrel's grid squad.

Baseball claimed no less number, and foremost among them was Carl Anthony, who besides being an efficient member of Coach Anderson's team, was elected president of the Sophomore Class. Bill Borman "won his spurs" in football, and did the same in baseball under Coach Frank's tutelage. Ed Copeland landed the position of reserve pitcher for the Petrels, and admirably assisted "Lefty" Dixon on the mound.

In the Intramurals we find the names of some co-eds who won their letters in this field. Billie Happoldt and Kathleen Wright rated as among the best girl athletes on the campus, and were two of the twenty high point girls last year. Their forte is basketball, and it's a real treat to see these two girls make spectacular shots, and devise new ways to outwit their opponents on the maple floor.

The Players Club, dramatic organization, had as its president this past year, Paul Carpenter, Jr., one of our Sophomores. This club did splendid work and produced "Dark Eyes," a one-act comedy which met with the approval of its audience. Paul also directed the Round Town Players in their first production, "Arms and the Man," which was well-acted and beautifully presented.

The Le Conte Club, honorary scientific organization on the campus, listed two of our classmates as probable members. Robert Stephenson and Jimmie Richardson so distinguished themselves in the field of science that they were asked to join this group.

So it is with pardonable pride that I point to us, the Sophomores of 1933-34, as one of the most versatile and representative groups ever assembled together, and with one glance at the above descriptions of just some of us, it is plain to see why I say we are "Wise Fools."



F  
R  
E  
S  
H  
M  
E  
N



Elizabeth Allen



Hugh Bishop



Sue Bailey



Frances Barge



Hubert Smith



Heath Wilbanks



Mrs. Sara Beattie



Eugene Marquis

Jacques Upshaw

Julia Johnson

Stacy Rowell

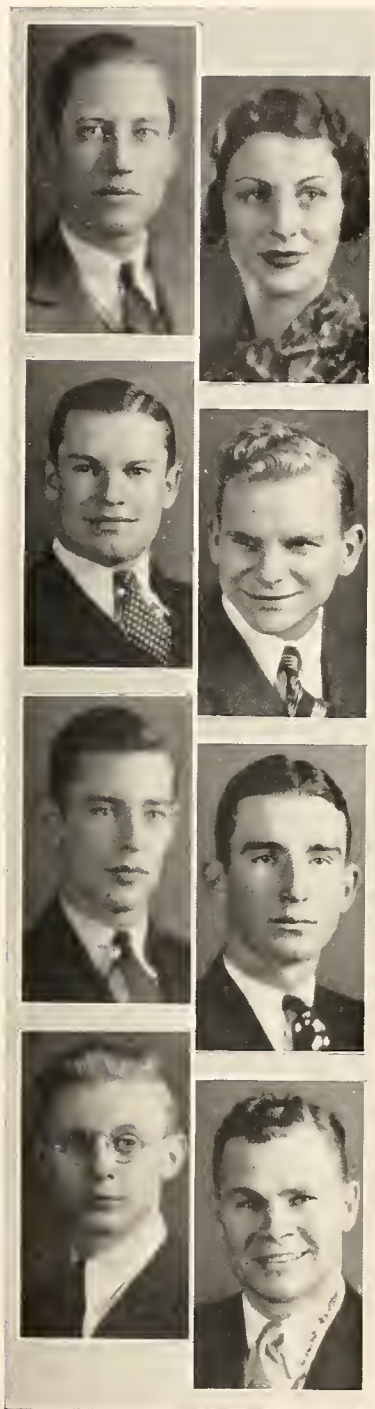
Joel George

Charles Wood

Robert Atkins

Ivan Miles

Alvin Thompson





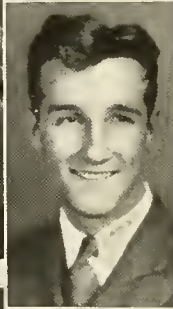
Fuessell Chisholm



Toinette Dorman



Annie Ruth Boggan



James Proctor



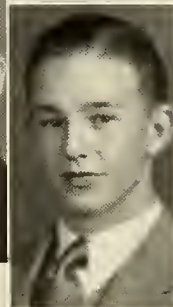
William Wilson



Lillian Booth



Edward G. Dees



Thomas E. Ewing

Virginia Tripp

C. G. Littleton



Stinson Adams

Mary Roberts



Lucile Wilson

Creighton Perry



Eloise Polak

Jack S. Puryear





Naomi Floyd



Florence Stevenson



Frances Gorman



Willard Hunnicutt



Archie Lewis



Pinky Jewel Gates



Buell Grant



John Ferguson

Evelyn Stevenson



## Freshmen Not In Pictures

Abbott, Melvin  
Adams, Albert C.  
Adams, Elizabeth  
Baskin, Beverly  
Bell, Ann  
Belle Isle, Charles  
Bishop, Clyde  
Blowers, John G., Jr.  
Bowen, Ralph  
Brock, John J.  
Bryant, Howard  
Burrows, Winifred  
Bolton, Speer  
Carnathan, Morris C.  
Causier, Arthur  
Cannon, Emile  
Carson, Homer S.  
Cleveland, Robert  
Clyburn, Ernest P.  
Clyburn, Stewart  
Cobb, Elsie Mae  
Cox, Ethel Ann  
Cox, John Boyd  
Craven, William  
Dunn, James G.  
Dodge, Sallie  
Downs, Alfred  
DeLoach, Elsie Lee  
Earl, Louis  
Elrod, Porter  
Edmundson, Charles  
Edwards, James W.  
Farr, James O.  
Folk, James N.  
Fike, Howard

Fishburne, Henry  
Ford, A. W., Jr.  
Flowers, Charles P.  
Gates, Cornelius  
Gibson, Jack  
Gaffney, Howard  
Godwin, Charles P.  
Graham, George G.  
Graham, Wilson  
Griffett, Frank  
Guy, Charles  
Haygood, Robert B.  
Harris, Robert  
Herold, Lantey  
Hester, N. C.  
Horton, Henry  
Hubbard, Theodore  
Huff, Paul  
Hutcheson, Raymond  
Johnson, Andrew  
Johnson, Robert  
Johnson, John  
Jolly, Milford  
Kienel, Bernard  
Kunde, Duane  
Kuppers, Bob  
Langley, Luther  
Larson, Helen M.  
Ledbetter, Drewery J., Jr.  
Lewis, Sally  
Lippold, Josephine  
Loy, William W.  
Maddox, Janice A.  
Mathews, H. G.  
Marks, John P.

Mathis, Edward  
Mashburn, Nathan  
Mag, Raymond  
Meyer, Francis P.  
Moody, William L.  
Moran, Clyde  
McDonald, Jack B.  
McDuffie, Betty  
McGeady, Joseph  
Nation, Steve  
Neal, Paul H.  
Nesbit, Charles  
Nuckolls, James L.  
Palmer, Lawrence  
Pearson, James A.  
Pentecost, Hal W.  
Pirkle, Scott  
Porter, Fred P.  
Partlow, Clyde  
Rhame, Richard  
Rogers, Eleanor  
Routh, James E., Jr.  
Ruff, Sidney S., Jr.  
Slater, Clayton  
Stevenson, Florence  
Sims, Elizabeth  
Smith, Earnest  
Smiley, John H.  
Snieder, Sid  
Stevens, Earnest C.  
Steed, Robert  
Strautman, Richard  
Strickland, Jack  
Strickler, Graham  
Skelton, John R.  
Silvey, Aubrey  
Seal, Harvey  
Swalley, William R.  
Thacker, Ralph W.  
Thompson, Carlton  
Tomasello, Theron  
Tone, Lawrence  
Vincent, Willis  
Wallace, Richard  
Walls, Edward  
Warshaw, Hilda  
Williams, Frank  
Williams, Robert  
Willis, Walton  
Wilson, Helen  
Wilson, Raymond  
Winters, Eugene  
Wofford, Irwin  
Woodward, Winton  
Zwick, Nathan

W

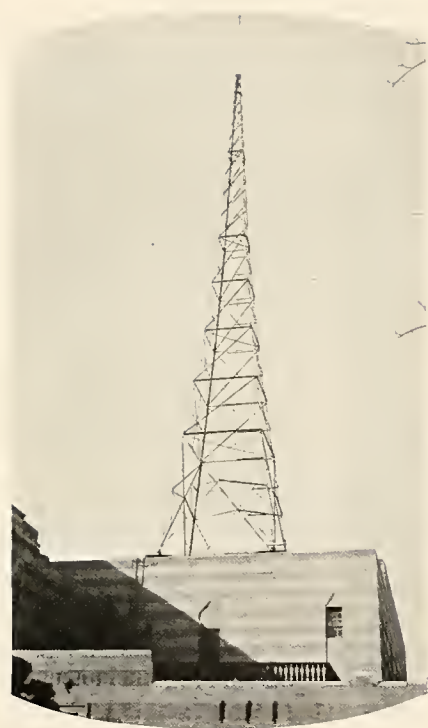
J

T

L

Radio





W  
J  
T  
L

## *Radio History at Oglethorpe University*

BY VERNON ANDERSON

**J**UNE 6, 1931 marked the beginning of a new era in the history of education. It was the birthday of Radio Station WJTL, the Radio Division of Oglethorpe University.

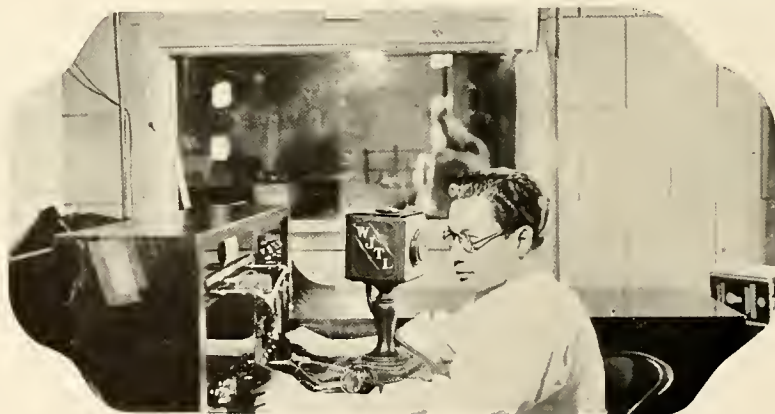
Early in the spring of 1931 Oglethorpe received the permission of the Federal Radio Commission to erect and operate a radio station. The generosity of Mr. and Mrs. John Thomas Lupton, donors of Lupton Hall, made possible the installation of one of the most completely equipped regional channel stations in America, whose call letters were formed from the initials of our gracious friends.

At first the entire station was located in Lupton Hall, on the campus of the University. The entire Biology Department was moved from Lupton Hall to Lowry Hall to make room for the new Radio Division. Two large studios were constructed and elaborately equipped and a small room was turned into a transmitting and control room.

Thus on June 6, with the beginning of regular lectures, Oglethorpe University became the possessor of the first standard Radio College in the history of the world. There have been many educational programs presented over many broadcasting stations, but never before, so far as we have been able to learn, in the history of this or any other country, has a complete college course been broadcast by a complete faculty in the same manner as when offered on the campus.

The equipment of WJTL is of the latest type available. The transmitter is an RCA 100-W, employing direct crystal control and 100 per cent modulation. RCA microphones and amplifiers are used in the studios. In addition, a new RCA frequency monitor has recently been purchased to enable the station to comply with the new government regulations concerning frequency deviation and frequency checking.

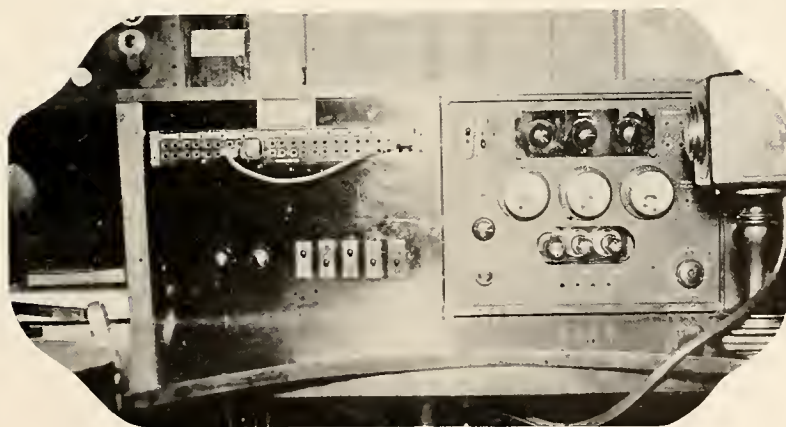
After a few months of operation in Lupton Hall, officials of the University decided that greater Atlanta could be better served by moving the transmitter nearer the center of the city. Accordingly, therefore, the Yaarab Shrine Mosque, one of the most beautiful buildings in the South, was picked as the new site for the transmitter. At the same time it was decided to erect a new type of antenna which would also add to



the efficiency of the station. This new antenna, which is a seven ton, 135 foot, base-insulated steel tower, is the first quarter-wave vertical radiator in the world. It represents an achievement resulting from years of study and research directed toward the production of a system giving maximum radiation of the power supplied to it. Engineers have pronounced it the ultimate in antenna construction. The tower was erected atop the Mosque and directly under it a transmitting room and a small studio were built. The large studios at Oglethorpe were retained, having been connected with the new transmitter location by special telephone lines. About the middle of November the work was completed and one Sunday afternoon WJTL broadcast her first program from the Yaarab Shrine Mosque. Reports soon showed that the expectations of the officials were justified.

A glance at a day's schedule will give some idea of the scope of the work carried on by the Radio Division. Each morning the station is opened with a devotional program from 6:45 to 7:00. This is followed by an hour of variety musical programs. At eight o'clock Dr. H. J. Gaertner lectures on beginners' German. A lecture is of fifty minutes duration and is followed by a ten minute recess, during which music is offered. At nine o'clock Dr. James E. Routh lectures on English, Idioms and Good Usage. A lecture on an Introduction to Economics is presented by Dr. D. Witherspoon Dodge at ten o'clock, and at eleven Dr. James E. Routh lectures on Types of literature. Prof. Francisco Perez offers a course in beginners' Spanish at twelve o'clock. Luncheon hour lasts from twelve-fifty until two o'clock. During this time a varied musical program is presented over the station. At two o'clock Dr. D. Witherspoon Dodge resumes the educational program with a lecture on Contemporary Civilization. At three o'clock a lecture is given on Business Problems. At four Dr. D. Witherspoon Dodge returns to the air to lecture on an Introduction to Philosophy. At five o'clock Dr. Mark Burrows concludes the day's educational activity with a lecture on the Biography of Musicians, magnificently illustrated with recordings of their respective works. From five-fifty until twelve, midnight, various commercial and sustaining programs are presented.

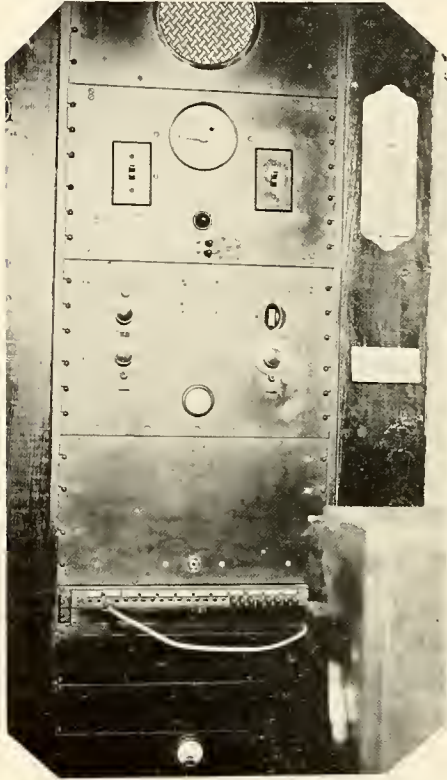
With the beginning of the 1932-33 year Oglethorpe University instituted a complete four year course in radio broadcasting. Every phase of radio work, including the commercial, managerial and technical aspects, is taught, together with courses in announcing, studio direction and program formulation. Completion of the required four year course entitles a student to a degree of Bachelor of Arts in the School of Radio Broadcasting. Oglethorpe thus became the first standard university in the world to offer a full four year course in radio learning to an accredited college degree. The regular faculty of the new radio college is headed by Dr. James E. Routh as dean,



The regular faculty of the new radio college is headed by Dr. James E. Routh as dean and others of the Oglethorpe faculty, as follows: Dr. John A. Aldrich, physics; Dean J. F. Sellers, chemistry; Dr. Mark Burrows, music; Dr. Thornwell Jacobs, history of the earth and its inhabitants; Professor Porohovshikov, Professor Perez and Professor Pattelli, modern languages; Dr. Gaertner, psychology; Dr. D. Witherspoon Dodge, radio ethics; Professor Vernon Anderson, studio management and radio theory; Professor Frank Parkins, radio technique; and professor Albert Riley, radio code.

The personnel of radio station WJTL has been drawn from every branch of the radio industry and from the student body of the university. The staff is as follows: Edward Hughes, general manager; Frank Parkins, chief engineer; Vernon Anderson,

assistant chief engineer; Paul Goldman, program director; Albert Riley, Robert Adams, and Frank Whitmore, technical engineers; Roger Skelton and Luther Nuckolls, control operators and announcers.



Because the activities of the Radio Division are not confined solely to the educational field, its history would not be complete without some mention of its entertainment facilities. WJTL has furnished the radio public some of the foremost musical talent of the South. The Oglethorpe orchestra, under the director of Professor Sterling Lanier, Nathan Zwick, and David Lashner became the WJTL studio orchestra and endeared itself to all who listen. The Glee Club has been a favorite with the radio audience. Oglethorpe athletic events have been and will be broadcast. Sunday devotional programs and Church services of St. Luke's Episcopal Church are regular features.

Closely linked with its educational work, are the dramatic features presented by WJTL. Sponsored by the Oglethorpe Players Club, a series of plays were broadcast and received favorable response. A class in radio drama was begun and produced some plays of notable quality. This

phase of work is largely under the direction of Dr. James E. Routh. The pioneer work begun by the students under his direction and guidance will be continued and enlarged upon. It is rapidly becoming one of the most important features of the Radio Division.

The introduction of the Radio Division to Oglethorpe University also opened up many new opportunities to members of the student body who wished to work for a part of their college expenses. A large number of these students are employed by WJTL. The studio orchestra is made up entirely of students, and several regular members of the staff of entertainers were drawn from the student body.

A large part of the personnel of WJTL is composed of students. Some who had the required characteristics were trained as announcers and those with technical training were employed as engineers. As entertainers, Oglethorpe students have proved highly versatile and some artists of real merit have been found.

F  
O  
O  
T  
B  
A  
L  
L

Athletics

The regular fac  
and others of th  
J. F. Sellers, ch  
the earth and it  
Pattelli, modern  
radio ethics; Pr  
fessor Frank P:

The person  
radio industry :  
Edward Hughes



phase of work  
work begun by  
enlarged upon.  
Division.

The introdu  
many new oppo  
part of their co  
WJTL. The st  
members of the :

A large par  
the required cha  
ing were employ  
highly versatile



ROBIN THURMOND, Captain  
of the 1933-34 Football team.

F  
O  
O  
T  
B  
A  
L  
L



COACH HARRY ROBERTSON  
Head Football Coach



Alternate Captain Harry Wrens

Captain Robin Thurmond

**G**RADUATION, mile stones passed, starting on a new life journey, courses run, speeches, commencement. But as the 1934 Yamacraw becomes an assured thing through process of change, let us pause and reflect a little on the Stormy Petrel gridmen that posted the "1933" account on the football records at Oglethorpe.

Suffering from the heavy hand of Ole Man Graduation for the past June Chief accountant Harry Robertson called his "33" model Petrels to report for practice on September 1st. Some sixty men answered the call. At the first appearance Coach Harry began to make new plans for no-draft ventilating, knee action and streamlining his new creation. Something that would be able to stand the rough road of the coming season. Many of the models of the season before were on hand to help the new members and to give advice on the testing ground. For the initial week Hermance Stadium became a place of groans, moans, and creaking chasses but with the trainers lubricating the new machines began to show some of their old form, so by the middle of the second week all were called to the track to give a performance. This proved an afternoon of good hard scrimmage. The watchful eyes of Chief engineer Robertson dilated with hopeful anticipation.

Some ten of this year's seniors answered that call and donned the costume for their "Swan Song" act. Those that were issued uniforms

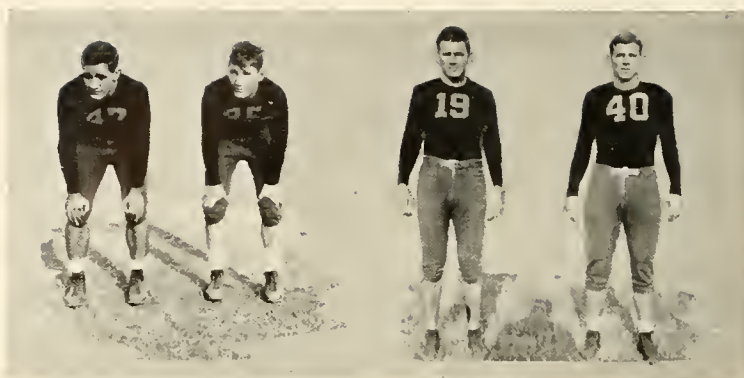


Pickard

Chandler

Shaw

McNeely



Mitrick

Anderson

Clark

Farmer

for the last time were Captain Bob Thurmond, Reed Craven, Phil Hildreth, Rudy Shouse, Harry Wrens, Jack Harrison and Sid Flynt. Anderson was the only quarterback in the crowd and Julian Herriot the only guard. All of these saw plenty of service during the season and most of them carved a niche for themselves in the Oglethorpe football hall of fame.

With but twenty one days to get his men in shape for the first game Harry Robertson had his hands full. The future was a hope for a fair season with a group of foes that had not been equalled before in the history of the school. Heretofore the Petrels have been called the giant killers because of their upsetting of Georgia, Georgia Tech, and many Eastern schools that had impressive teams. Could the little Birds do the same thing this season, was the thoughts that passed through the mind of Chief Robby, as he gazed at the names of Auburn, Alabama, Manhattan, and Mercer, which appeared on the schedule card.

From the middle of the second week scrimmages came every day, fast and furious. The days slipped by, five days, ten, and then the day of the first game. What would the Petrels do with the strong team that was coming from Newberry College. The papers carried headlines, front page stories and on September 21st, the Oglethorpe Petrels opened the local college football season at night with the fighting warriors from South Carolina.

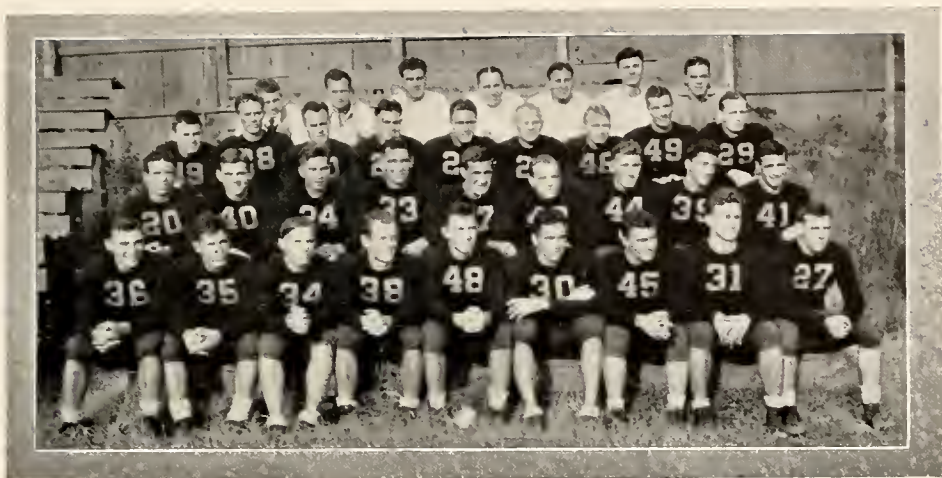


Robison

Darracott

Craven

Freeman



1933-34 Football Team and Coaches

The opening whistle sounded and the Stormy Birds had started their season. From the beginning the game was in favor of the Robby men. When the final whistle blew they had won their first game with an overwhelming score of 25 to 0. The paper predicted a successful season for the gridmen from the Peachtree Road Institution. Things looked bright, the players were full of hope and determination.

In the first fracas Harry Wrens, Phil Hildreth, Bob Thurmond, Jack Harrison, Rudy Shouse, Reed Craven and Eddie Anderson showed that they were the best for their respective positions and gave the this year's senior class one of the best records that any senior class has ever had so far as football is concerned. Did these fellows strut? Several younger men showed that they would come in for some serious consideration before the curtain was drawn on the '33-'34 campaign. These standouts were Sam Leslie, Jim Darracott, Willie Belle Robinson, Hank Freeman, Bee Clark, Jack McNeely, Major Chandler, and several others.

After the results of this opening encounter was known, word came from over at the University of Alabama, the next opponent, that the trainer of the Red Elephants said that they were sticking up their ears and taking notice of the Oglethorpe encounter. Through the beginning of the next week much work was undergone to shape a good attack for the Elephants. Leaving on Friday and going by the Hound way (Greyhound Bus) the team landed all ready for the scrap on the following afternoon.

The sky was dark and the rain descended, so did the Red Mammoths. Throwing their trunks in the air they ran rough shod over the Petrels to the score of 34 to 0. But though they seemingly had a sweet afternoon of the affair, they were hard pressed at times to make the grade. Several times the Birds pecked dangerously at their goal line but failed by inches. Weight and experience could not be overcome.

The return was slightly less bright than the trip to Tuscaloosa but on the Monday following practice was as usual. This time the work was for the trip to New York and the Manhattan game. This affair proved to be a battle of coaches. Rebertson was pitting his brain and brawn against his old master and former coach. The younger man was the victor and Oglethorpe chalked up another inter-sectional victory. The victory created a stir among sports circles because an untried team rose to the heights to defeat a powerful and much vaunted clan of footballers under Chick Meehan.

## Football Scores, 1933-34

OGLETHORPE		OPPONENTS
25	Newberry College	0
0	Alabama	34
6	Manhattan	0
12	Chattanooga	16
13	Stetson	6
13	Erskine	6
6	Auburn	27
0	Citadel	13
0	Mercer	31

## Football Schedule, 1934-35

September 21—	NEWBERRY COLLEGE	in Atlanta
September 29—	AUBURN	in Auburn
October 6—	CITADEL	in Augusta
October 13—	CHATTANOOGA	in Chattanooga
October 27—	HOWARD	in Atlanta
November 3—	ERSKINE	in South Carolina
November 10—	CATHOLIC UNIVERSITY	in Washington
November 17—	MIAMI	in Miami
November 24—	Open	
November 29—	MERCER	in Atlanta

# INTRA-MURAL SPORTS



Winners of Girls Outdoor Baseball, Horseshoes, Basketball, Hit-pin, Volleyball and Free Throw are included on this page of Intramurals.

# Intramural Winners

## MEN

### *Club Standing*

KAPPA ALPHA . . . . .	1135
DELTA SIGMA PHI . . . . .	1050
ACES . . . . .	900
PI KAPPA PHI . . . . .	870
ALPHA LAMBDA TAU . . . . .	810
ALL-AMERICANS . . . . .	730
THETA KAPPA NU . . . . .	125

### *First Place Club Winners*

Volleyball . . . . .	Pi Kappa Phi
Free Throw . . . . .	Delta Sigma Phi
Basketball . . . . .	Alpha Lambda Tau
Cross Country . . . . .	Delta Sigma Phi
Indoor Baseball . . . . .	Delta Sigma Phi
Boxing . . . . .	Aces

### *First Place Individual Winners*

Free Throw . . . . .	Stacey Rowell, DSP
Cross Country . . . . .	Jack Puryear, DSP
Boxing—	
122 lb. class—	Alfred Downs, KA
130 lb. class—	Ralph Thacker, KA
134 lb. class—	William Loy, Aces
138 lb. class—	F. Chisholm, KA
144 lb. class—	Jack Puryear, DSP
155 lb. class—	S. Clyburn, ALT
165 lb. class—	Paul Neal, Aces
175 lb. class—	H. Frieman, Aces

## WOMEN

### *Club Standing*

CHI OMEGA . . . . .	1st
KAPPA DELTA . . . . .	2nd
RAMBLERS . . . . .	3rd
BETA PHI ALPHA . . . . .	4th

### *First Place Club Winners*

Hit-pin Baseball . . . . .	Ramblers
Free Throw . . . . .	Ramblers
Basketball . . . . .	Chi Omega
Volleyball . . . . .	Ramblers
Indoor Baseball . . . . .	Beta Phi Alpha
Tennis Singles . . . . .	Chi Omega

### *First Place Individual Winners*

Free Throw . . . . .	Hilda Warshaw, R
Tied for 1st . . . . .	Marion Fugitt, CO
Tennis Singles . . . . .	Bryan, CO



FRANK B. ANDERSON  
Head Baseball Coach

## Baseball Schedule

April 17, 18	University of Georgia
	At Buford, Ga.
April 23, 24	Georgia Tech
	Rose Bowl, Atlanta
April 27, 28	University of Georgia
	At Athens, Ga.
April 30, May 1	Georgia Tech
	At Ponce de Leon Park
May 4, 5	Auburn
	At Ponce de Leon Park
May 11, 12	Auburn
	At Auburn, Alabama



Vance



Anderson



Clark



Craven

O GLETHORPE should be and is proud of her baseball history. In 1924 the Stormy Petrels held the undisputed title to the Southern Collegiate Baseball Championship, and again in 1930 played the same high brand of ball to win this honor again. If we look back into the records of Oglethorpe teams, we find such names, famous in professional ranks, as Wingo, Carlyle, Turk, Porter, Bryant, Appling, and others. Much of the credit for the success of these players goes to Coach Frank B. Anderson, who is called the "father of athletics" at Oglethorpe University. His fame as a coach has spread all over the south and during the past years many a big league scout has been seen on the campus looking over the players as they practice out on Hermance Field.

Last year's graduates from the team left many important positions to be filled. Those who played their last game for Oglethorpe were: Whitley, a flashy second baseman and a consistent batter; Chink Martin, a short stop whose place will be difficult to fill; Charley George, who is now catching for New Orleans and is headed for the "big show"; Sam Baker, a centerfielder who was a one manoutfit; Parker Bryant, a great first baseman, and Reed Craven, a hustling catcher.

The men back from last year are: Vance, Dixon, Fisher, Robison, Clark and Anderson. The new candidates are: Farmer, Moon, McGinty, Sullivan, Wade, Harrison, Anthony, Copeland, McCullough, and Thranhardt. It is a little early in the season to make a prediction as to the merits of the current team, but in practice the boys look good. So far this season Oglethorpe has won three and lost three in practice games.



I  
N  
T  
E  
R  
S  
O  
R  
O  
R  
I  
T  
Y  
C  
O  
U  
N  
C  
I  
L

Organizations





# Beta Phi Alpha



Chi Chapter  
of  
BETA PHI ALPHA

*Flower*  
Yellow Tea Rose

Founded May 8, 1909 at University  
of California, Berkeley, California.

*Colors*  
Old Gold and Kelly Green

33 Chapters

President—MILDRED EAVES.  
Vice-President—SARA SHARP, JACK GORDY  
Secretary—LOUISE REAVES  
Treasurer—MARTHA CARREKER  
Editor—CATHERINE LITTLETON  
Pledge Captain—JEAN FARRELL

Elizabeth Allen  
Sue Bailey  
Anne Bell  
Annie Ruth Boggan  
Lillian Booth  
Martha Carreker  
Pauline Coleman  
Frances Collier  
Ethel Cox  
Elsie DeLoach  
Mildred Eaves

Jean Farrell  
Betty Few  
Naomi Floyd  
Claudine Gates  
Emma Gates  
Jewel Gates  
Jacqueline Gordy  
Louise Reaves  
Sara Sharp  
Evelyn Stevenson  
Elizabeth Sudderth



# Alpha Tau of Kappa Delta

Founded October 23, 1897 at Virginia  
State Normal School, Farmville, Virginia.

*Flower*  
White Rose

73 Chapters

*Colors*  
Olive Green and Pearl White

President—AVERY COFFIN

Vice-President—BARBARA NOOT

Secretary—EVELYN BURNS

Treasurer—GENEVIEVE NEUHOFF

Editor—SARA FELLARS

Elizabeth Adams

Sara Beattie

Evelyn Burns

Avery Coffin

Ethel Ann Cox

Toinette Dorman

Sara Fellars

Genevieve Neuhoff

Barbara Noot

Sara Mitchell

Mary Roberts

Eleanor Rogers

Lillian Smith

Virginia Tripp

Martha Truluck



# Chi Omega



Sigma Gamma Chapter  
of  
Chi Omega

Founded April 5, 1895 at University  
of Arkansas

*Flower*  
White Carnation

*Colors*  
Cardinal and Straw  
87 Chapters

President—MARY BRYAN

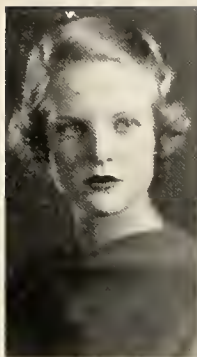
Vice-President—ELIZABETH WOOLFORD

Secretary—FLORENCE BRYAN

Treasurer—ST. JULIAN PRINGLE

Pledge Captain—JANE CRENSHAW

Frances Barge  
Florence Bryan  
Mary Bryan  
Martha Carmichael  
Linda Cox  
Jane Crenshaw  
Marion Fugitt  
Nellie Jane Gaertner  
Frances Gorman  
Sidney Klein  
Josephine Lippold  
Clyde Partlow  
Eloise Polak  
St. Julian Pringle  
Aline Timmons  
Elizabeth Woolford  
Evelyn Wix



# Kappa Alpha

(Southern)

## BETA NU CHAPTER

Founded December 21, 1865 at Washington College (now Washington and Lee) Lexington, Virginia.

68 Chapters

*Flower*  
Red Rose and Magnolia

*Colors*  
Crimson and Gold

President—SIDNEY FLYNT

Vice-President—THORNWELL JACOBS, JR.

Secretary—JACK COMPTON

Treasurer—SPENCER WORTHY

Feusell Chisholm

Jack Compton

Alfred Downs

Howard Fike

Sidney Flynt

John Ferguson

Frank Griffett

Charlie Guy

Jack Harrison

Willard Hunnicutt

Thornwell Jacobs, Jr.

Sidney Kilpatrick

James E. Routh, Jr.

Frank St. Claire

Robert Steed

Jimmie Steele

Robert Stevenson

Ralph Thacker

Bill Wilson

Spencer Worthy



# Pi Kappa Phi

Pi Chapter

Founded December 10, 1904 at College  
of Charleston, S. C.

42 Chapters

*Flower*  
Red Rose

*Colors*  
Yellow and White

MRS. JUNIUS E. WILLIAMS, *Sponsor*

Archon—EVERETT PEED

Treasurer—PHIL HILDRETH

Secretary—MARVIN BENTLEY

Warden—EDDIE ANDERSON

Historian—MERRIMAN SMITH

Eddie Anderson  
Carl Anthony  
Oscar Beasley  
Marvin Bentley  
Bill Borman  
Dennis Brown  
Kelly Byars  
Buster Carter  
Bill Connell  
Lloyd Davis  
Tom Ewing  
Hoyt Farmer  
Julian Herriot  
Phil Hildreth  
Bob Koppers  
Archie Lewis  
Lawrence Palmer  
Everett Peed  
Fred Porter  
James Richardson  
Rudy Shouse  
Merriman Smith  
Joe Strickland  
Tubby Thompson  
Chris Wooten



# Alpha Lambda Tau

## ALPHA CHAPTER

Founded at Oglethorpe University in  
the year 1921

*Colors*  
Gold and Black

*Flower*  
American Beauty Rose

President—REED CRAVEN

Vice-President—HERMAN LANGE

Secretary—DOUGLAS HANSARD

Stinson Adams, Jr.

Robert Atkins

Ernest Clyburn

Stewart Clyburn

Ralph Bowen

Ed Copeland

Percy Dixon

D. W. Gentry

Douglas Hansard

John Henderson

Henry Horton

Clarence Huey

Andrew Johnson

Herman Lange

Luther Langley

Leontes McDuffie

Elmo McGinty

Cecil Moon

Charles Murphy

Frank Stewart

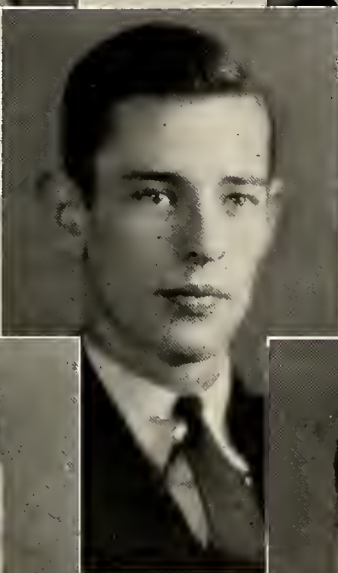
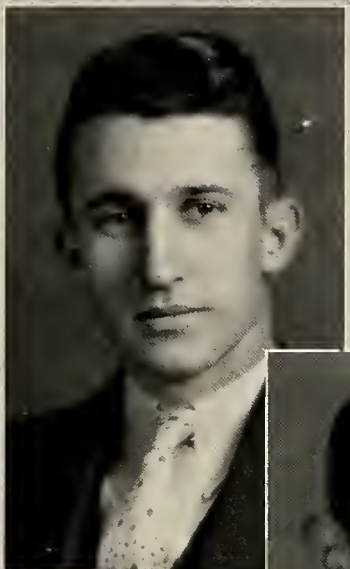
Richard Wallace

G. C. Winters

Charles Wood

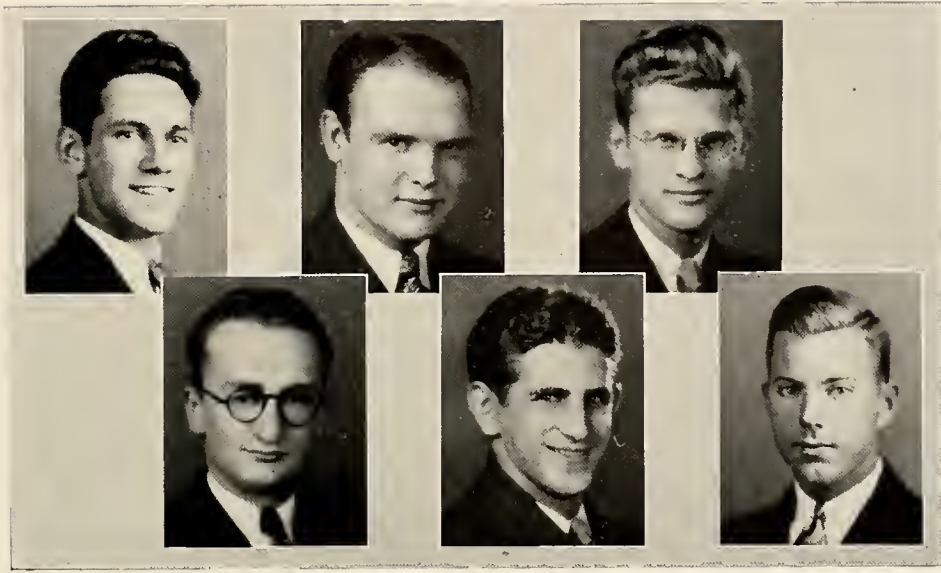
Graham Strickler

John Patrick



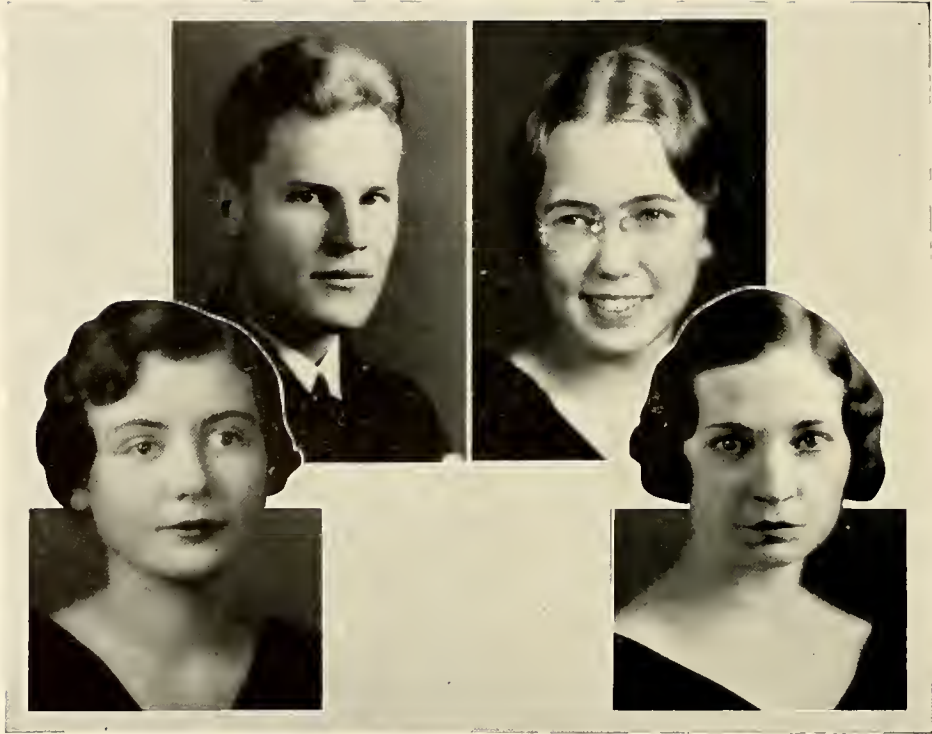


PHI KAPPA DELTA HONORARY SCHOLASTIC FRATERNITY  
Mildred Eaves, Lloyd Davis, Nellie Jane Gaertner



## Stray Greeks

FRANK WALL	. . . . .	<i>Theta Kappa Nu</i>
ALBERT RILEY	. . . . .	<i>Sigma Chi</i>
HAROLD AARON	. . . . .	<i>Sigma Gamma</i>
DAVID LASHNER	. . . . .	<i>Sigma Gamma</i>
LEON RUBIN	. . . . .	<i>Sigma Gamma</i>
JAY GLENN	. . . . .	<i>Sigma Alpha Epsilon</i>



## Coat-of-Arms

Winners of Coat-of-Arms must make an average of 93 or above for five consecutive terms.

Nellie Jane Gaertner

Mildred Eaves

Herman Lange

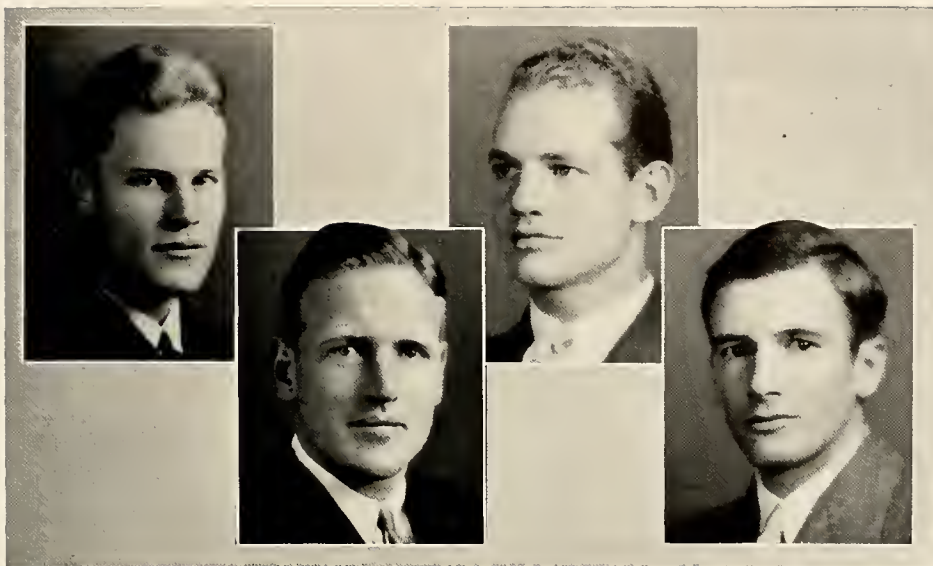
Sam Gelband

Lloyd Davis

Sara Mitchell

Thornwell Jacobs, Jr.

Ina Reeves



## Boar's Head

Phil Hildreth

Lloyd Davis

Gilbert Wood

Sid Flynt

Robin Thurmond

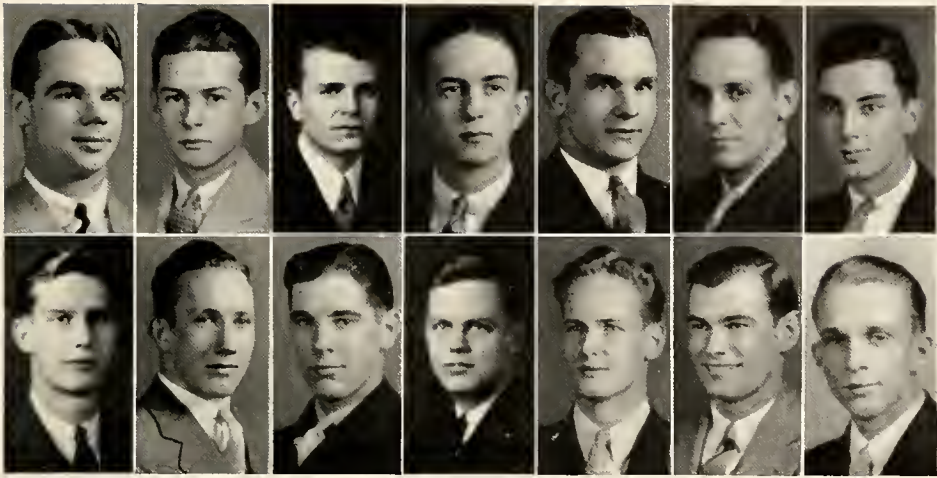
# Zeta Upsilon

Founded April 2, 1914 at University  
of Alabama. Organized at Oglethorpe  
in 1930

*Colors*  
Black and Red

President—SIDNEY KILPATRICK

Emmett Atkins  
Johnnie Blowers  
Dennis Brown  
Albert Carter  
Jack Compton  
Bill Connell  
Reed Craven  
Howard Fike  
Julian Herriot  
Clarence Huey  
Willard Hunnicutt  
Thornwell Jacobs, Jr.  
Sidney Kilpatrick  
C. G. Littleton  
John Patrick  
William Shaw  
John Smiley  
Merriman Smith  
Frank St. Claire  
Robert Stevenson  
Dick Wallace  
Bill Wilson  
Freddie Wood  
C. D. Wooten  
Chris Wooten  
Douglas Youngblood



Kilpatrick, Carter, Wood, Huey, Wooten, Littleton, Fike, Wilson,  
Wallace, Hunnicutt, Connell, Jacobs, Compton, Stevenson

# Lord's Club

President—PHILIP HILDRETH

Secretary and Treasurer—JAY GLENN

Philip Hildreth

Everett Peed

Lloyd Davis

Jay Glenn

James Cromer

Ed Copeland

Sidney Flynt

Freddie Wood

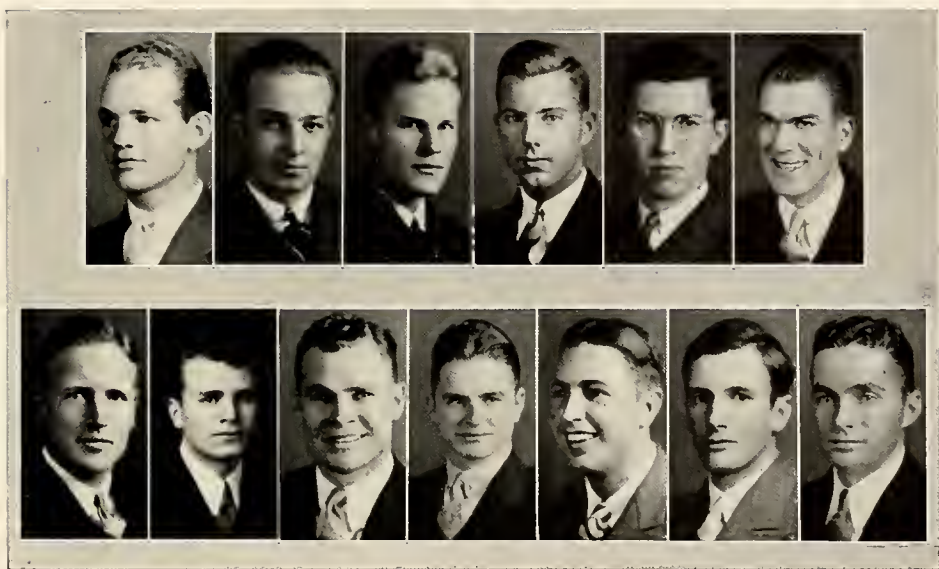
Alvin Thompson

Marvin Bentley

Kelly Byers

Gilbert Wood

Robin Thurmond



Hildreth, Peed, Davis, Glenn, Cromer, Copeland, Flynt, Wood, Thompson  
Bentley, Byers, Wood, Thurmond

# Blue Key

Founded at the University of Florida in  
1920. Oglethorpe chapter established  
in 1926

President—SIDNEY FLYNT

Vice-President—GILBERT WOOD

Secretary-Treasurer—MARVIN BENTLEY

Phil Hildreth

Gilbert Wood

Marvin Bentley

Fred Wood

Jack Compton

Rudy Shouse

Albert Riley

Emory Chandler

Jay Glenn

Jack McNeely

Ed Copeland

Carl Anthony

Paul Carpenter

Bob Stephenson

Bob Thurmond

Lloyd Davis

Sidney Flynt

Chris Wooten

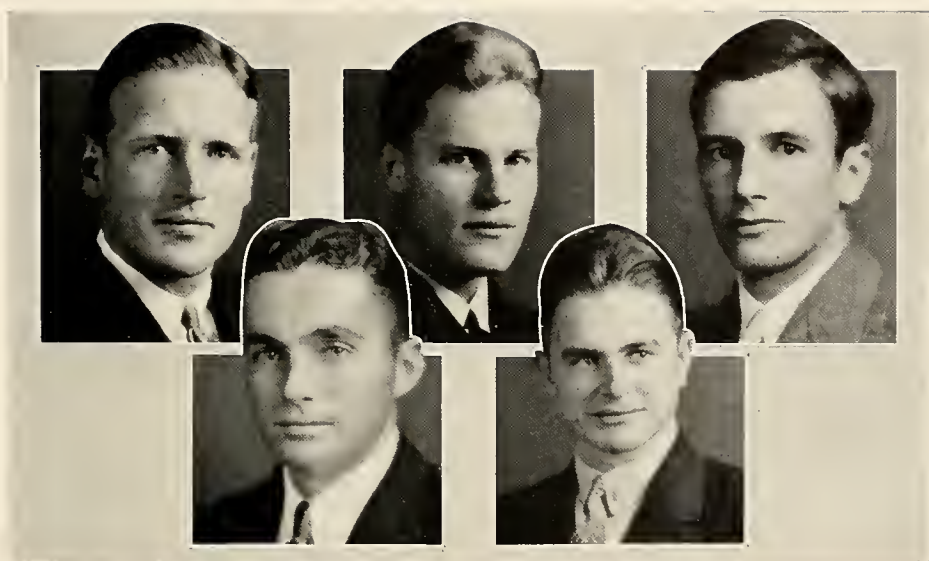
Reed Craven

Vernon Anderson

Kelly Byers

Sterling Lanier

John Patrick



Sidney Flynt, Lloyd Davis, Gilbert Wood  
Robin Thurmond, Marvin Bentley.

# Duchess Club

Founded in 1927 to promote good will  
among outstanding women students.

*Colors*  
Lavender and Pink

President—SIDNEY KLEIN  
Secretary and Treasurer—SARA SHARPE

Sue Bailey  
Frances Barge  
Anne Bell  
Lillian Booth  
Florence Bryan  
Mary Bryan  
Evelyn Burns  
Avery Coffin  
Toinette Dorman  
Marion Fugitt  
Frances Gorman  
Sidney Klein  
Elsie Martin  
Genevieve Neuhoff  
Barbara Noot  
St. Julian Pringle  
Sara Sharpe  
Elizabeth Sims  
Lillian Smith  
Evelyn Stephenson  
Elizabeth Woolford



Klein, Sharpe, Fugitt, Gorman, Woolford, Pringle,  
Noot, Neuhoﬀ, Burns, Bryan, Bryan,  
Coffin, Martin, Bailey, Booth, Dorman, Barge

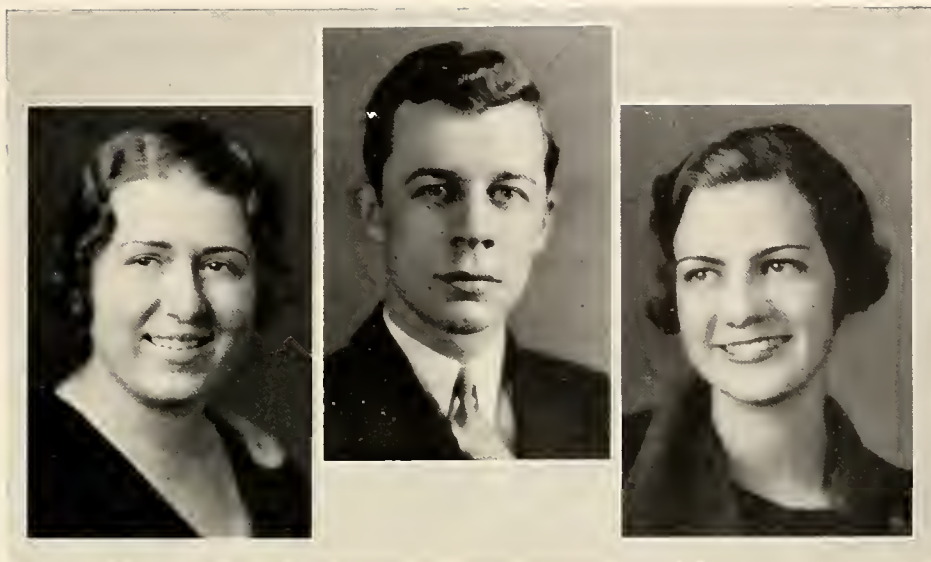
# Players Club

**F**OURTEEN YEARS AGO the Oglethorpe University Players Club was organized with Marion Gaertner as President and Caroline Cobb as Director. Since then, it has forged ahead until it is now one of the leading college theater groups. As director Miss Cobb was followed by Fred Stewart, Earl Blackwell, Sam Miller and the present director, Paul Carpenter, Jr.

THE PLAYERS CLUB has contributed no little talent to the stage and screen. Abraham Orowitz was one of the first to graduate from this organization to the New York stage where he appeared in "Counselor at Law." Fred Stewart was praised highly by the New York critics for his performance in "Ladies of Creation." Earl Blackwell veered from the stage and is now working in motion pictures for the Metro-Goldwyn-Mayer Picture Corporation in Hollywood, Cal. Claudia Smaw's thespian ability was well received by Atlanta audiences when she played here in stock last year. Paul Carpenter, Jr., met with an appreciative audience in his portrayals while playing with the Peruchi Players here last season.

HIS FIRST ATTEMPT at play production at Oglethorpe was in the presentation of "Dark Eyes," a one-act comedy which proved a financial as well as a practical success. Martha Carmichael and Bill Loy, as the leads, carried their parts well, and Eleanor Rogers, Jean Farrell, Thornwell Jacobs, Jr., and Paul Carpenter, Jr., were excellent in the supporting cast.

AN INTERESTING SUPPLEMENT to the Players Club is the class in Play Production, held once a week under the direction of Paul Carpenter, Jr. This class tends to train the students in stage technique and to fit them for parts in Players Club productions.



PAUL CARPENTER, JR. . . . . *President and Director*  
 MARTHA TRULUCK . . . . . *Vice-President*  
 BILLIE HAPHOLDT . . . . . *Secretary and Treasurer*

# M E M B E R S

Elizabeth Adams  
 Fairis Bagwell  
 Sarah Beattie  
 Evelyn Burns  
 Florence Bryan  
 Mary Bryan  
 Martha Carreker  
 Feusell Chisholm  
 James Cromer  
 Jean Farrell  
 Sara Fellars  
 Sidney Flynt  
 Nellie Jane Gaertner  
 Emma Gates  
 Thornwell Jacobs, Jr.  
 Joel George  
 Willard Hunnicutt  
 Lamar Kemp

Helen Larson  
 Ruth Lewis  
 Bill Loy  
 Elsie Martin  
 Francis Meyer  
 Annette Noel  
 Barbara Noot  
 Eloise Polak  
 James Proctor  
 Herta Rice  
 James Richardson  
 Mary Roberts  
 Elinor Rogers  
 Sara Sharpe  
 Dorothy Shepherd  
 Palmer Smith  
 Sarah Taylor  
 Virginia Tripp

## Debate Council

SIDNEY FLYNT	.	.	.	.	.	.	.	.	.	.	.	.	.	.	.	.	.	<i>Chairman</i>
LEWIS EVANS	.	.	.	.	.	.	.	.	.	.	.	.	.	.	.	.	.	<i>Boy's Secretary</i>
RUTH LEWIS	.	.	.	.	.	.	.	.	.	.	.	.	.	.	.	.	.	<i>Girl's Secretary</i>

### VARSDTY MEMBERS

Lewis Evans  
Jack McNeely

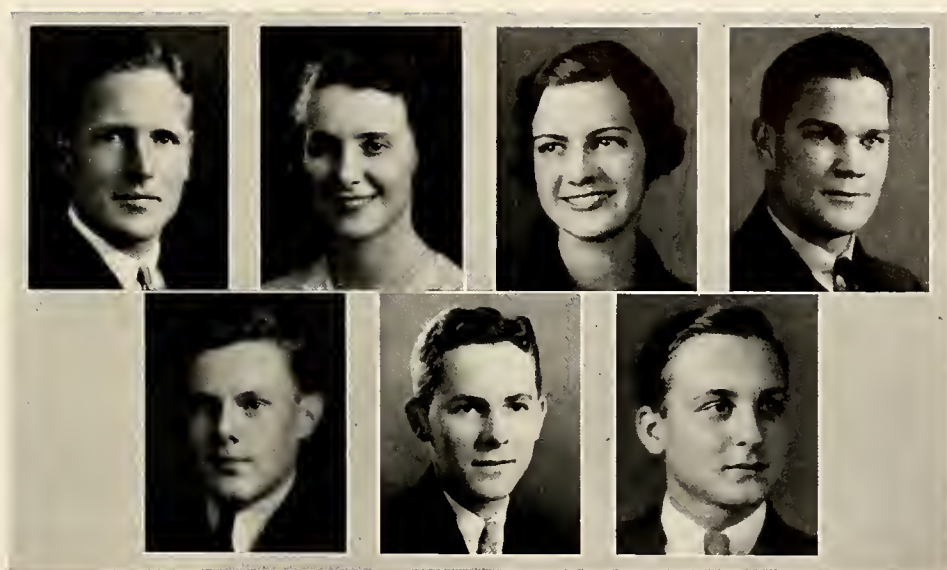
Ruth Lewis  
Billie Hapholdt

Louise Mitchell

### FRESHMEN MEMBERS

Ralph Thacker  
Feusell Chisholm

Creighton Perry  
Emil Cannon



Flynt, Lewis, Hapholdt, McNeely  
Perry, Thacker, Chishold

### STUDENT'S MIDNIGHT

A sputtering lamp on the mantle-shelf,  
And the fire burning low;  
The world has nodded off to sleep,  
And I must go.

A spatter of rain on the window-sill,  
And the cold wind blustering by;  
The world forgets it ever lived,  
And so must I.

A shuddering thought of the morrow's care,  
And a sigh for the yesterday;  
And now for prayer and a little sleep  
The While I may.

—WIGHTMAN F. MELTON

### FROM ONE REJECTED

When I am dead,  
And Mistress Spring  
Shakes our her snow-  
Flecked golden head.

What if you lie  
Above my grave,  
And think of times  
Gone by, and why

Now that I dwell  
So far away,  
My memory  
You can't dispel,

Why then my brow  
Will not be sad,  
But calm and cold  
As yours is now.

—T. JACOBS, JR.

Y  
A  
M  
A  
C  
R  
A  
W

*President-Chief  
of the Editor  
Manager  
Manager*



1

Publications

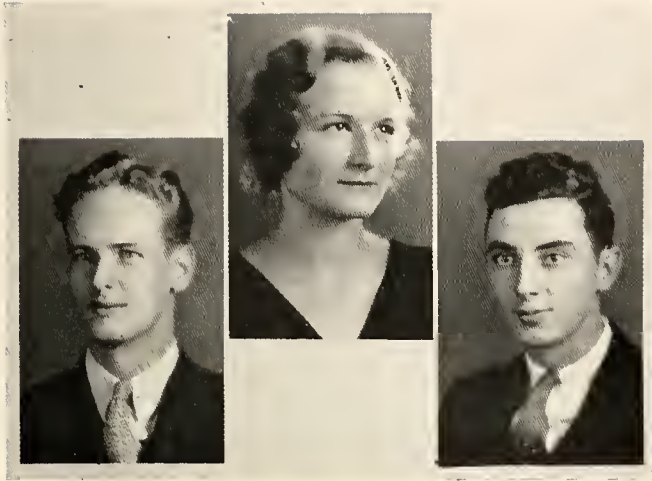
## STUDE

A sputtering la  
And the fire  
The world has r  
And I must ge

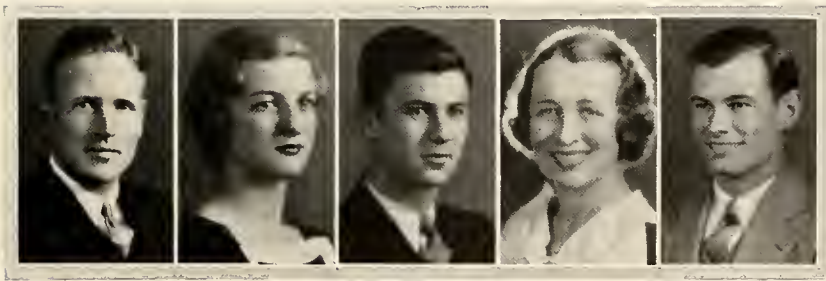
A spatter of rai  
And the cold v  
The world forget  
And so must I

A shuddering th  
And a sigh fo  
And now for pr  
The While I n

# Y A M A C R A W



SARA SHARPE	Editor-in-Chief
THORNWELL JACOBS, JR.	Associate Editor
BILL WILSON	Business Manager
HOWARD FIKE	Business Manager



Flynt, Coffin, Gelband, Littleton, Compton

# The Stormy Petrel

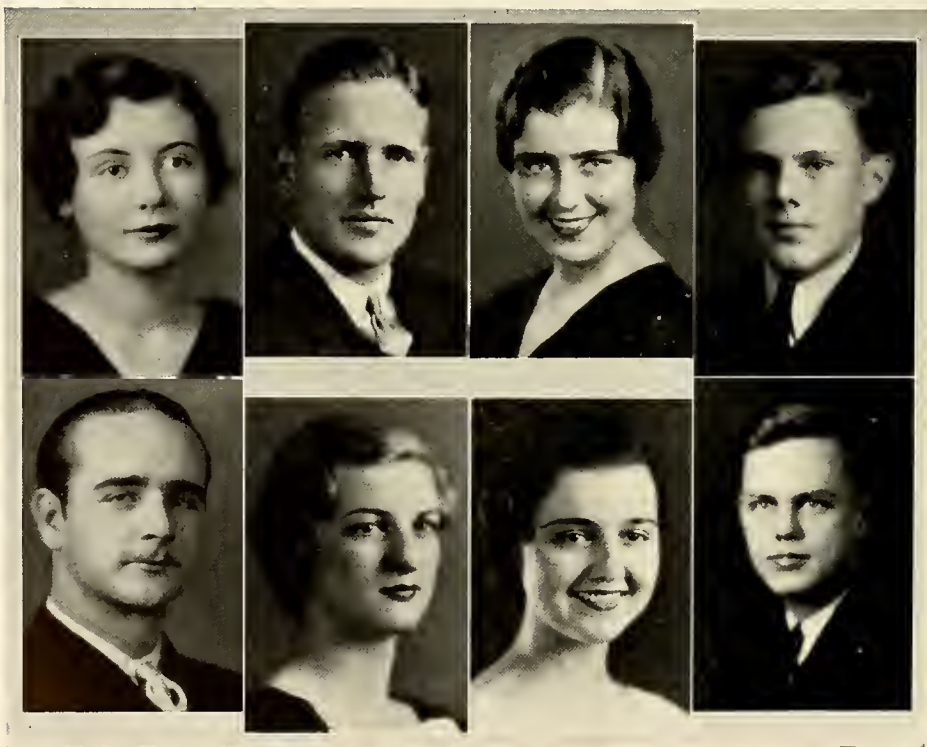
Owned and operated by the students of Oglethorpe University. Published every Friday of the school year, and entered as third class mail matter.

## STAFF

SIDNEY FLYNT .....	EDITOR
HOWARD FIKE .....	ASST. EDITOR
JEAN FARRELL .....	ASST. EDITOR
BILL CONNELL .....	SPORTS
BUELL GRANT .....	POETRY
LAWRENCE PALMER .....	EXCHANGE
MERRIMAN SMITH .....	COLUMNIST
SARA MITCHELL .....	COLUMNIST
CREIGHTON PERRY .....	REPORTER
RALPH THACKER .....	REPORTER
BOB KUPPERS .....	REPORTER
AVERY COFFIN .....	REPORTER
SARAH FELLERS .....	REPORTER
ELMO MCGINTY .....	REPORTER

## BUSINESS STAFF

WILLIAM WILSON .....	BUSINESS MANAGER
JIMMIE JEPSON .....	ADVERTISING MANAGER
ARCHIE LEWIS .....	CIRCULATION MANAGER



FEBRU

# HIS THORPE

# HIS THORPE

# HIS THORPE

# HIS THORPE

# HIS THORPE

hen the Association of  
ia Colleges dropped Og  
e University from  
ership on Saturda  
30, 1932," our  
recently, "they  
They calle  
people c  
of the  
of  
th.

**Petrels Play**

Geor  
the  
ion  
and we  
well, to  
abuses in  
of e  
cred  
THEATRE GUILD  
ACTRESS INTERV

# HIS THORPE

## EVERETT LEE

# HIS THORPE

HAVE PICTURE TAKEN  
FOR YANACRAW TOD

# HIS THORPE

in education has begun in  
 at the Athorpe University  
**New Zealand Hears**  
**WJTL Second Time**  
 which brought been heard in New  
 a committee the second time. The  
 made by an impartial early every Sun-  
 tion of the State Depart at Waihopu  
 Zealand,  
 ar when the very men proposing voted,  
 and they were also the very men w.  
 Athorpe assassins not inspectors.

# HIS THORPE

BY MARTHA KEYS

# HIS THORPE

# ADO, Captains And

# HIS THORPE

**Baseball Practice  
Into Second Week**

# HIS THORPE

## Cooper Is Elected Freshman President

# HIS THORPE

## Boys More Studious, Co-Eds Lead In Intelligence

# HIS THORPE

# HIS THORPE

# Discusses Ousting

# HIS THORPE

...disinterested persons.  
...assumption is that  
...blind if the  
...of this oust  
...ent times, I  
...of Oglethorpe Univer  
...the Association of  
...own  
...anything that  
...adversely against  
...But the public will  
...ask why they were so thou  
...Oglethorpe and what busi  
...of theirs to discuss Dr. Sun  
...with the Judge who  
...moment passing  
...ask whether  
...these  
...credite  
...agency wh  
...thority to acc  
...ma, namely,  
...self. Late  
...in an  
...thority  
...draw from  
...orgia Colleges.  
...organization respect  
...a courteous man  
...of its members.  
...local and civil  
...lanta

...MAY 1932  
...CAST  
...AT MIKE  
...of the State  
...Sanford, Inspect  
...Department of  
...made a  
...nd on  
...of the  
...ing.  
...making an inve  
...the courses whic  
...given; the repor  
...formly good."  
...September fi  
...super  
...the Hig  
...ti

...A Fight  
...of Oglethorpe Univer  
...the Association of  
...own  
...anything that  
...adversely against  
...But the public will  
...ask why they were so thou  
...Oglethorpe and what busi  
...of theirs to discuss Dr. Sun  
...with the Judge who  
...moment passing  
...ask whether  
...these  
...credite  
...agency wh  
...thority to acc  
...ma, namely,  
...self. Late  
...in an  
...thority  
...draw from  
...orgia Colleges.  
...organization respect  
...a courteous man  
...of its members.  
...local and civil  
...lanta

...Gathered By  
...ROLLING STONE  
...STATE  
...RD BOILED ACTRESS SAYS  
...COLLEGE PLAYS PROBABLY 'SLOPPY'  
...Block Referees  
...ngers' Argument  
...Why? Because Oglethorpe  
...demanded in the vineyard

...Jones Edits  
...Westminster  
...BREWING  
...BY REA

*Ask of me what thou wilt: The gold thy heart desires,  
The place where rubies flame and diamonds light their fires.  
But e'er thy hand has grasped my treasures passing rare,  
Bend low thine ear, I would with thee this secret share:  
Ask not for wealth, nor fame, nor ease, nor sceptered rod;  
Choose duty's stern command to toil for men and God.*

# The Westminster Magazine

---

PUBLISHED QUARTERLY AT OGLETHORPE UNIVERSITY. GEORGIA

---

Edited by

ROBERT ENGLAND

Associate Editors

T. C. WILSON

EDWARD J. O'BRIEN

NATHAN HASKELL DOLE

VIRGINIA STAIT

---

D E C E M B E R . . . 1 9 3 1

---

# **BOZART and Contemporary Verse**

*Combining JAPM and The Oracle*

Founded by ERNEST HARTSOCK



Edited by

DR. WIGHTMAN F. MELTON

Bi-Monthly

OGLETHORPE UNIVERSITY, GEORGIA

\$2.00 a Year, 40c a Copy

OUTSTANDING STUDENTS

Features



Golden opinions from all sorts of people.—*Shakespeare.*

The love of praise, howe'er concealed by art,  
Reigns more or less and glows in every heart.

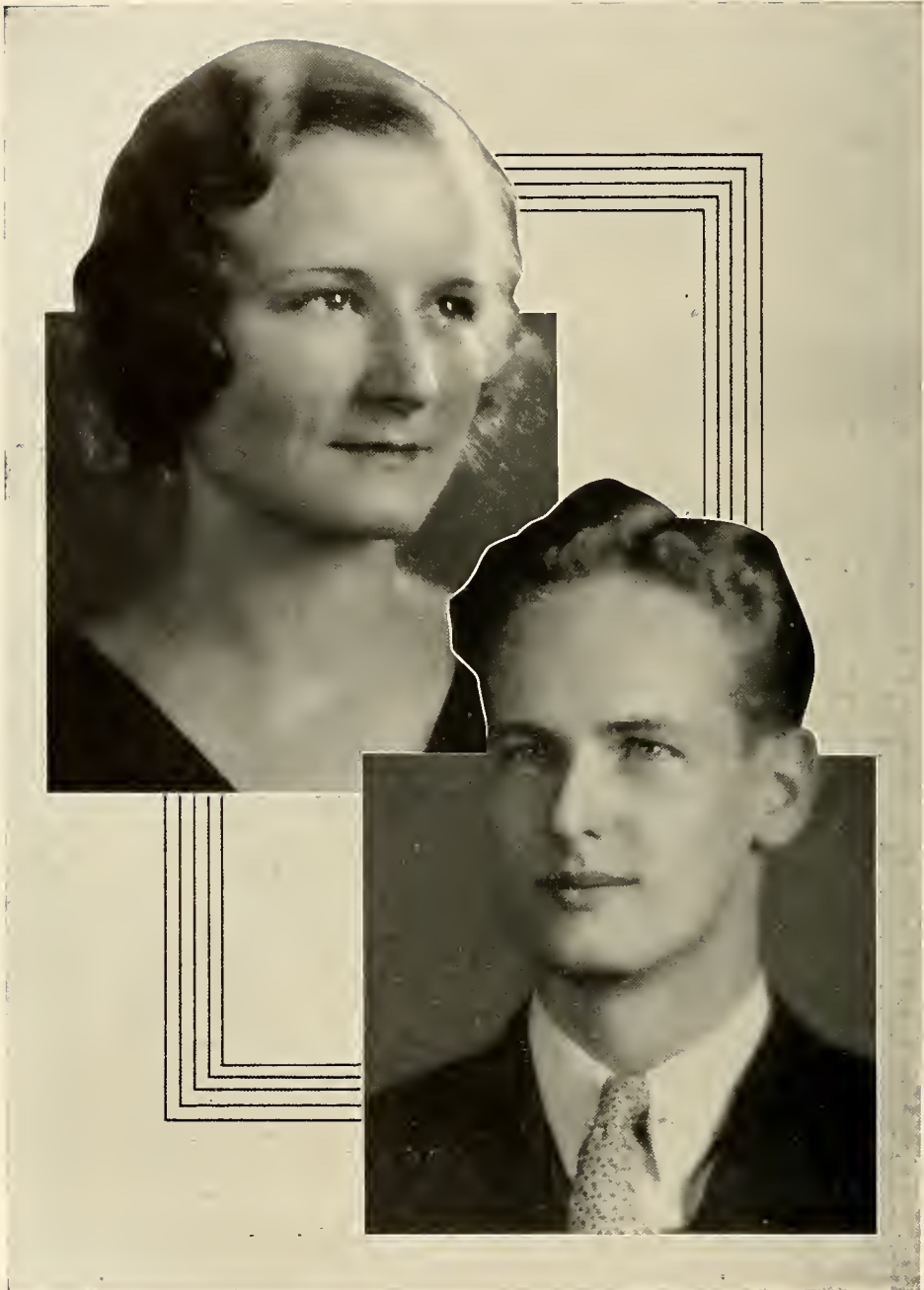
*Dr. E. Young.*

Good name in man and woman, dear my Lord,  
Is the immediate jewel of their souls:  
Who steals my purse, steals trash; 't is some-  
thing, nothing;

'T was mine, 't is his, and has been slave to  
thousands;

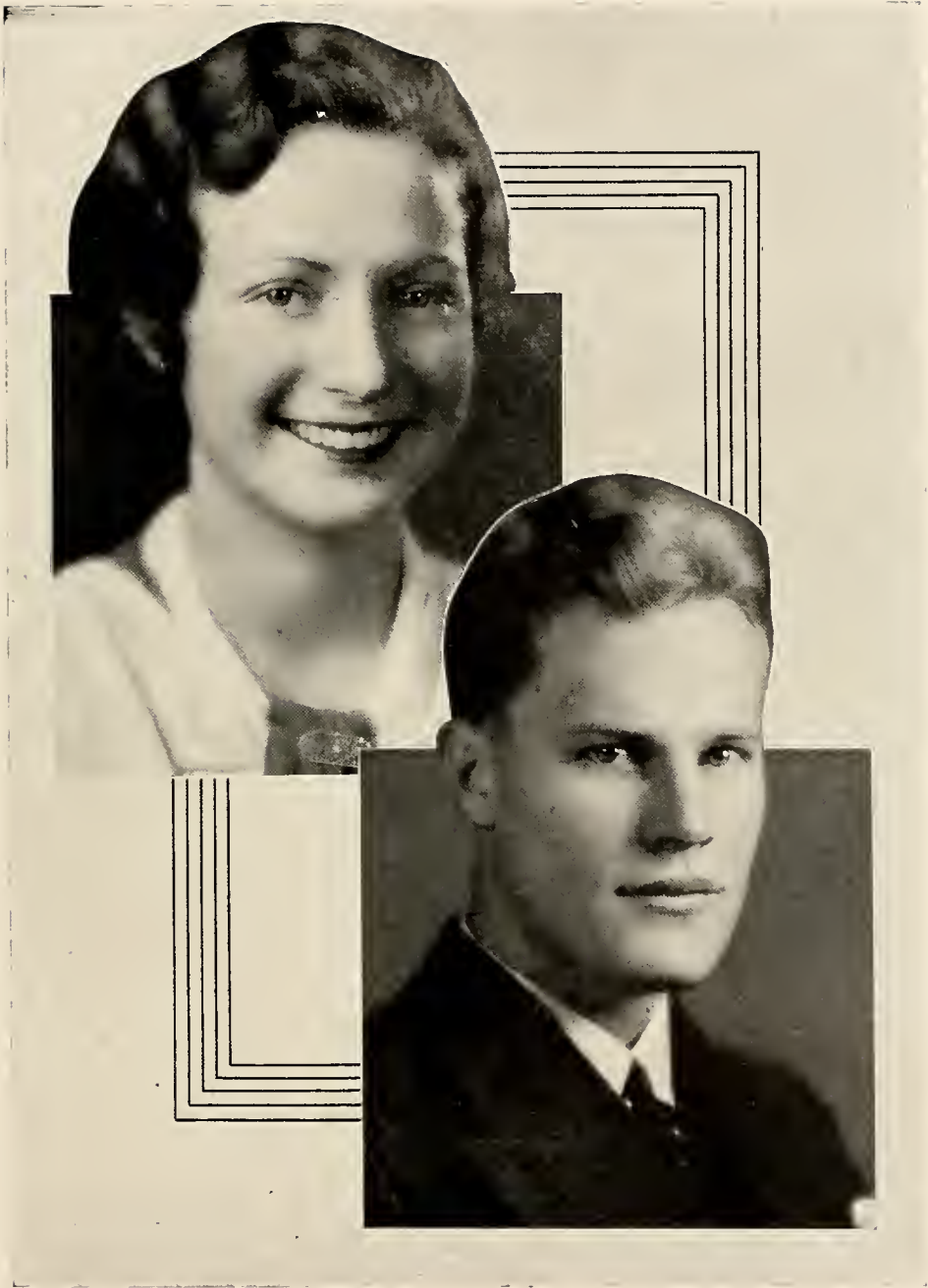
But he that filches from me my good name  
Robs me of that which not enriches him,  
And makes me poor indeed. *Shakespeare.*

Unblemished let me live, or die unknown;  
O grant an honest fame, or grant me none! *Pope.*



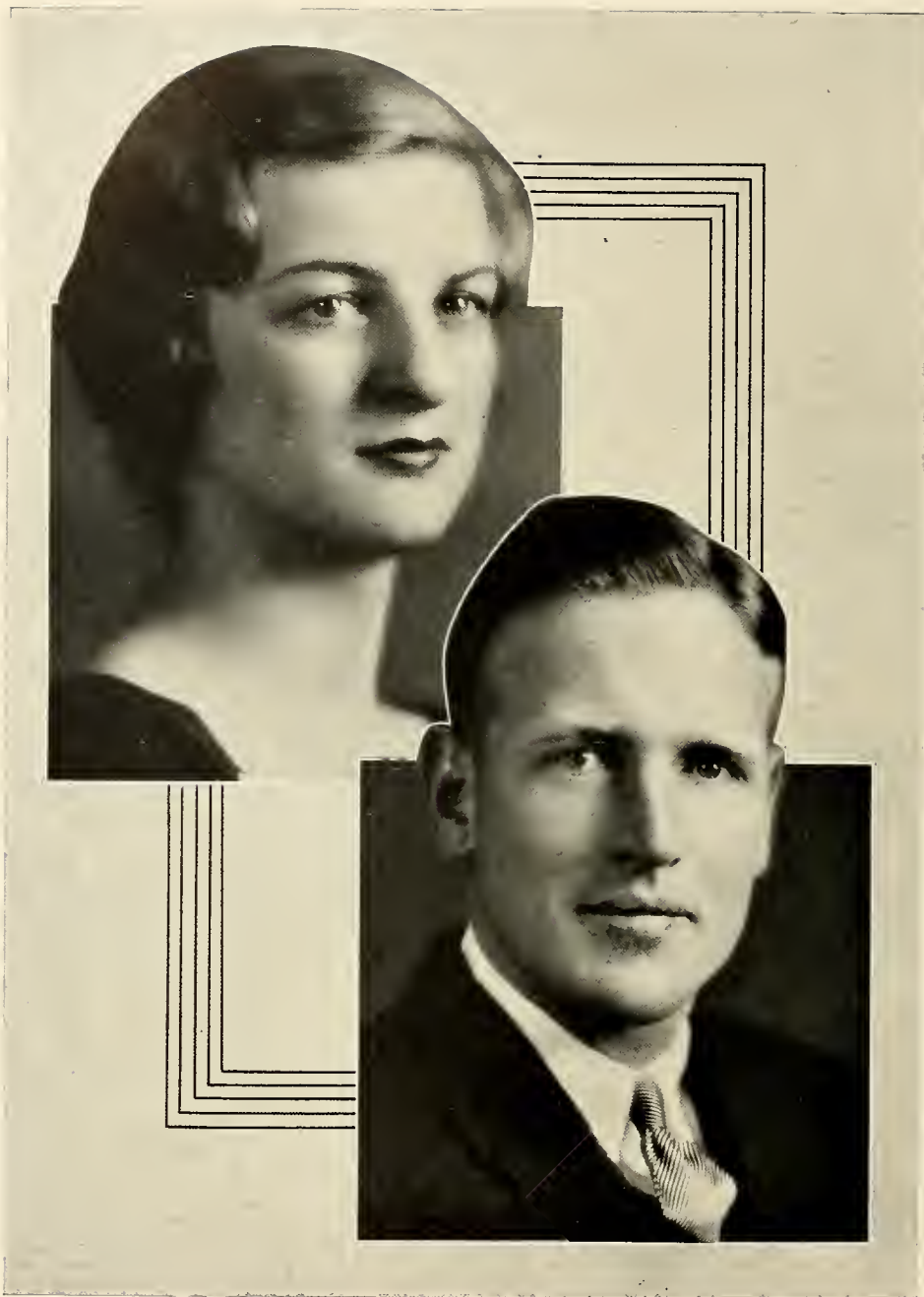
SARA SHARPE

THORNWELL JACOBS, JR.



JACQUELYN GORDY

LLOYD DAVIS



AVERY COFFIN

SIDNEY FLYNT



MILDRED EAVES

ROBIN THURMOND









*CONSOLATION*

I am weary of the passing hours,  
Weary of the tardy noon,  
The crawling minutes steal my powers,  
Empty moments come too soon.

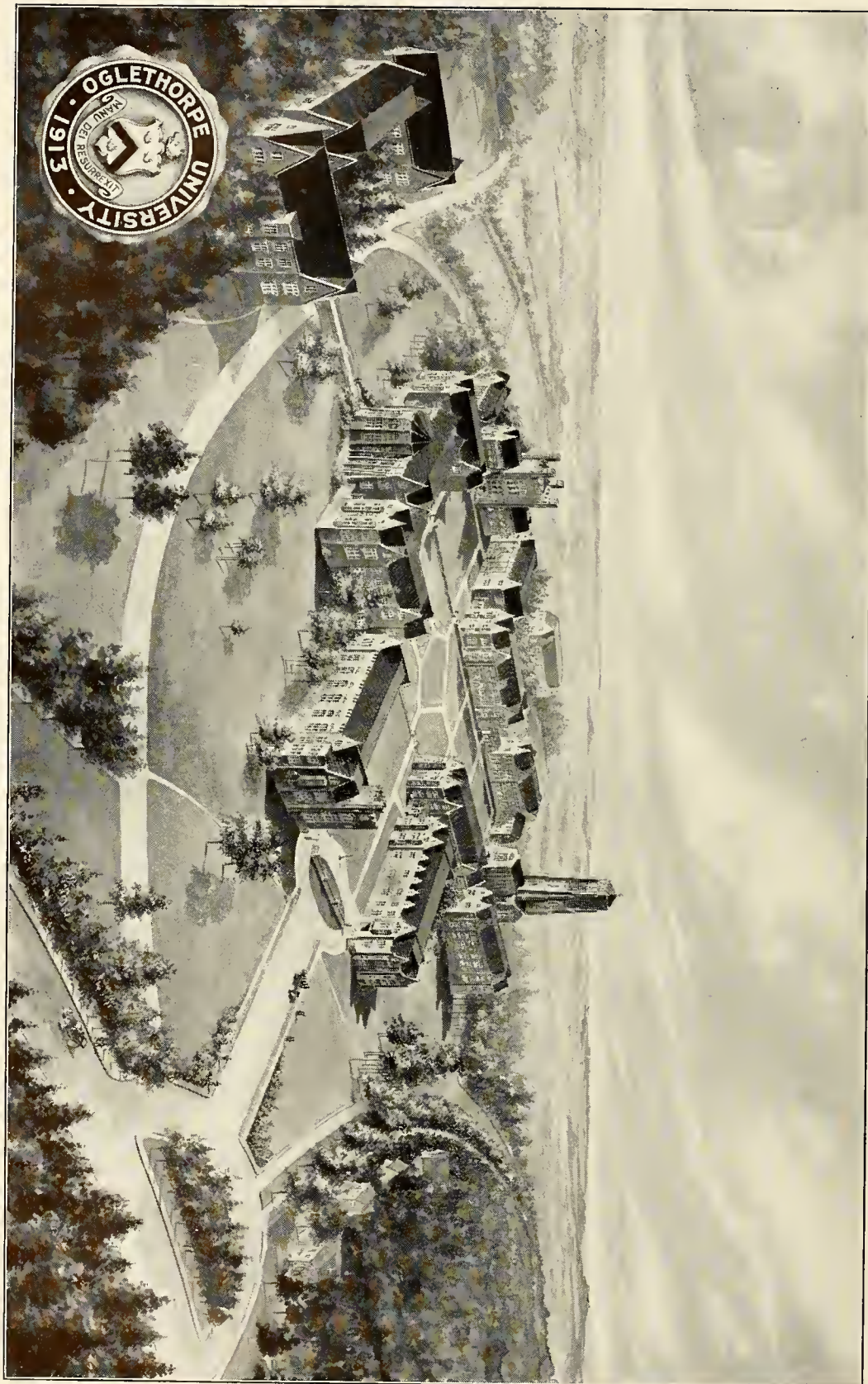
Visions sing a song of praise,  
To quell my aching breast.  
To them my arms upraise,  
Thankful, for the peaceful rest.

My hopes and my desires,  
Are truths of silvery beams,  
My soul with love aspires,  
To the myriad land of dreams.

—BUEL GRANT



P  
A  
S  
T  
I  
M  
E  
S



Have you heard Merriman's new wine song? "You ferment for me!"

—————O—————

Cannibal Prince: Am I late for dinner?

Cannibal King: Yes, every one's eaten.

—————O—————

Bill: Who was that lady I seen you on the street with last night?

Larry: That wasn't no street; that was an alley.

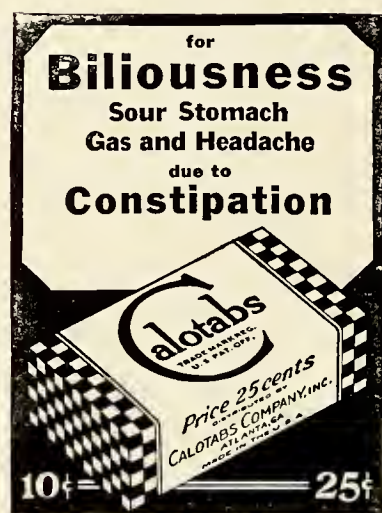
—————O—————

The height of impossibility: A street cleaner keeping his mind out of the gutter.

—————O—————

Merriman: "Can you imagine—I found a feather in my sausage this morning."

Kilpatrick: "Heh, heh,—musta been a bird dog."



"There are four requisites to a good short story," explained Mr. England to the class. "Brevity, a reference to religion, some association with the royalty and an illustration of modesty. Now, with these four things in mind, I will give you thirty minutes to write a story."

Ten minutes later the hand of Bull Shaw went up.

"That's fine, Bull," he complimented, "and now read your story to the class."

Bull read: "My, Gawd," said the Countess, "take your hand off my knee."

—————O—————

A droll tale is told about the deaf and dumb man who had a nightmare and broke his knuckles on a bedpost, screaming.

—————O—————

Here's one for you cross word puzzle fans—A five word letter meaning kick in the pants—Fiask.

—————O—————

C. G.—"Does this account go in my ledger?"

Chris—"Ledger conscience be your guide."

—————O—————

Teacher: "Now, Robert, what is a niche in a church?"

Bobby: "Why, it's just the same as an itch anywhere else, only you can't scratch it as well."



THE PHOTOGRAPHS

IN THIS BOOK

WERE MADE

BY

ELLIOTTS' STUDIO

Dr. Nick: "Who can tell me something about Nero?"

Bright Frosh: "Is he the one mentioned in Nero, My God to Thee?"

—————O—————

"I had ox-tail soup today, and I feel bully."

"I had hash, and feel like everything."

—————O—————

1936: See you're all packed up to go home. Glad your Junior year is over?

1935: Yup, be Senior next year.

—————O—————

Everett: "A man is never older than he feels. Now this morning I feel as fresh as a two-year-old!"

Elizabeth: "Horse or egg?"

—————O—————

A Co-ed was talking to one of the football men as the two sat listening to a chimes recital.

"Beautiful, aren't they?" remarked the girl.

"Pardon?" inquired the football man.

"I say they're beautiful aren't they?"

"I'm sorry," he roared, "but I can't hear a word for those chimes."

*Engravings by*  
JOURNAL  
ENGRAVING  
COMPANY  
ATLANTA

Tubby (to waiter in dining room) "Do you serve shrimps here?"

Waiter—"Sure, sit down."

—————O—————

Pat: "Do you know what Betty Boop said when she came out of the bakery shop?"

Buster: "No, what?"

Pat: "Been eatin' dough!"

—————O—————

Isabelle has legs iike this ( )

Georgia's go thusly ) (

Penelope's are all amiss ) !

Like this my love's just must be !!

—————O—————

Ben be nimble

Ben be quick

Ben fall over the candlestick

Ben Burnie.

# Who's Who

## BOYS

Best All-Round	Sid Flynt
Boy Who Has Done Most for School	Sid Flynt
Best Student	James E. Richardson
Best Athlete	Belton Clark
Best Looking	Chris Wooten
Most Popular	Sid Flynt
Best Dressed	Paul Carpenter
Most Courteous	Paul Carpenter
Most Dignified	Philip Hildreth
Wittiest	Harry Wrens

# Who's Who

## GIRLS

Best All-Round . . . . .	Jacquelyn Gordy
Girl Who Has Done Most for School . . .	Mildred Eaves
Best Student . . . . .	Mildred Eaves
Best Athlete . . . . .	Jacquelyn Gordy
Most Attractive . . . . .	Elizabeth Woolford
Most Popular . . . . .	Jacquelyn Gordy
Best Dressed . . . . .	Genevieve Neuhoff
Most Courteous . . . . .	Jean Farrell
Most Dignified . . . . .	Mildred Eaves
Cutest . . . . .	Elizabeth Woolford

# TYPEWRITERS

*All Makes and Models  
Sold, rented and repaired*

by the  
American Writing Machine Company

67 Forsyth Street, N.W.

Established 1880

**\$5.00 Monthly Payments**

# A u t o g r a p h s

# A u t o g r a p h s

# A u t o g r a p h s

# A u t o g r a p h s







